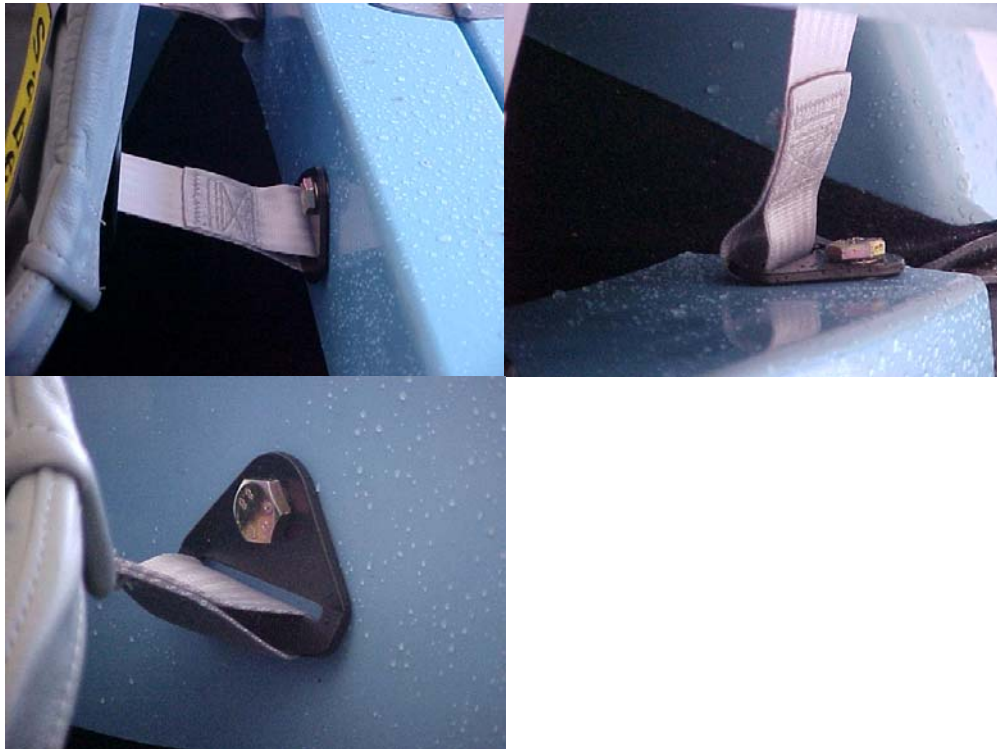


Details of Enquiry:

The upper seat belt mounting brackets on a Kit car are fixed into the rear bulkhead, (See photos) and the seat belt direction of pull is 90 degrees to the bulk head instead of in the natural direction of pull for these brackets. Are these acceptable?

**Answer:**

Yes.

In respect of the bolt and loop bracket direction of pull only, bending of the bracket may occur but neither the bolt (assuming the correct seat belt bolt) or bracket is likely to fail under the Directive Test.

The vehicle structure continues to require a full assessment.

Answer Given By: TSB

Date: April 2006

Further Action: