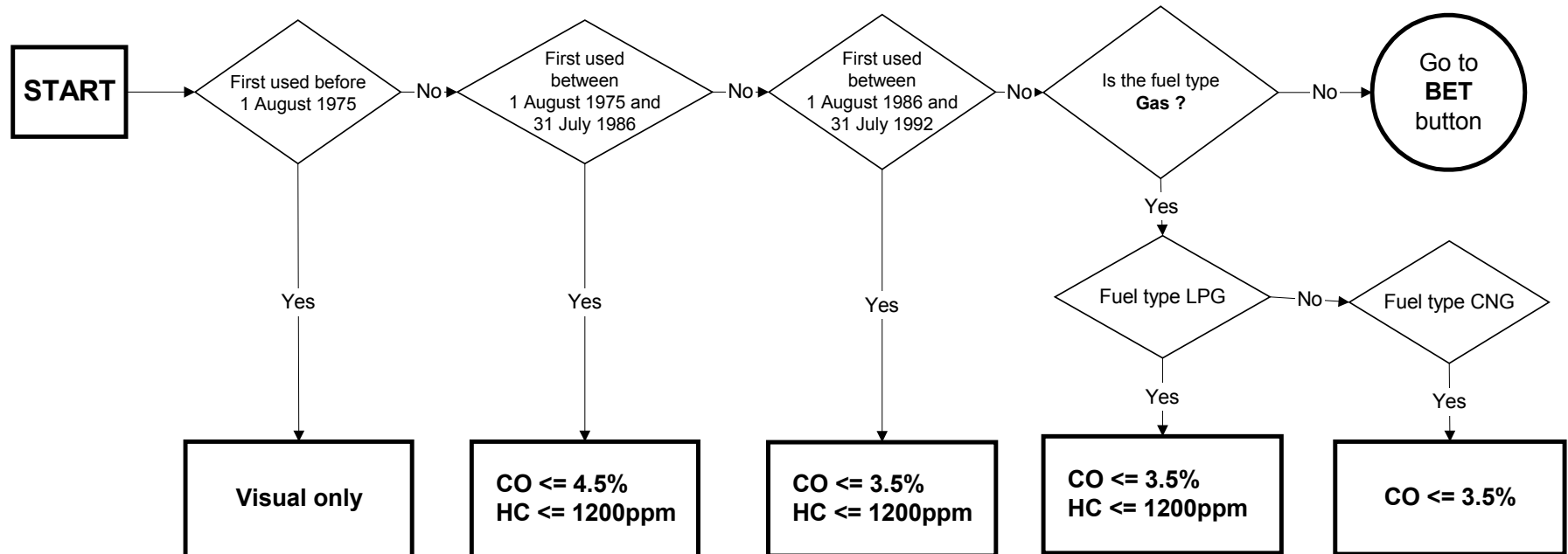


Exhaust Emissions - Spark Ignition - non CAT Test **7.3**

Emission test and limits selection



Information: *All Non Catalyst Tests*

This inspection applies to:

All spark ignition engined vehicles with four or more wheels in Class IV and VII.

1. Use the flowchart to select the correct limits and emission test.
2. When using the flowchart reference should be made to the notes on page 4

For emissions purposes only, kit cars and amateur built vehicles first used before 1 August 1998 and Wankel rotary-engined vehicles first used before 1 August 1987 are to be considered first used before 1 August 1975. Kit cars and amateur built vehicles first used on or after 1 August 1998 ("S" reg) are required to obtain Single Vehicle Approval and should be tested to the limits stated on the registration document.