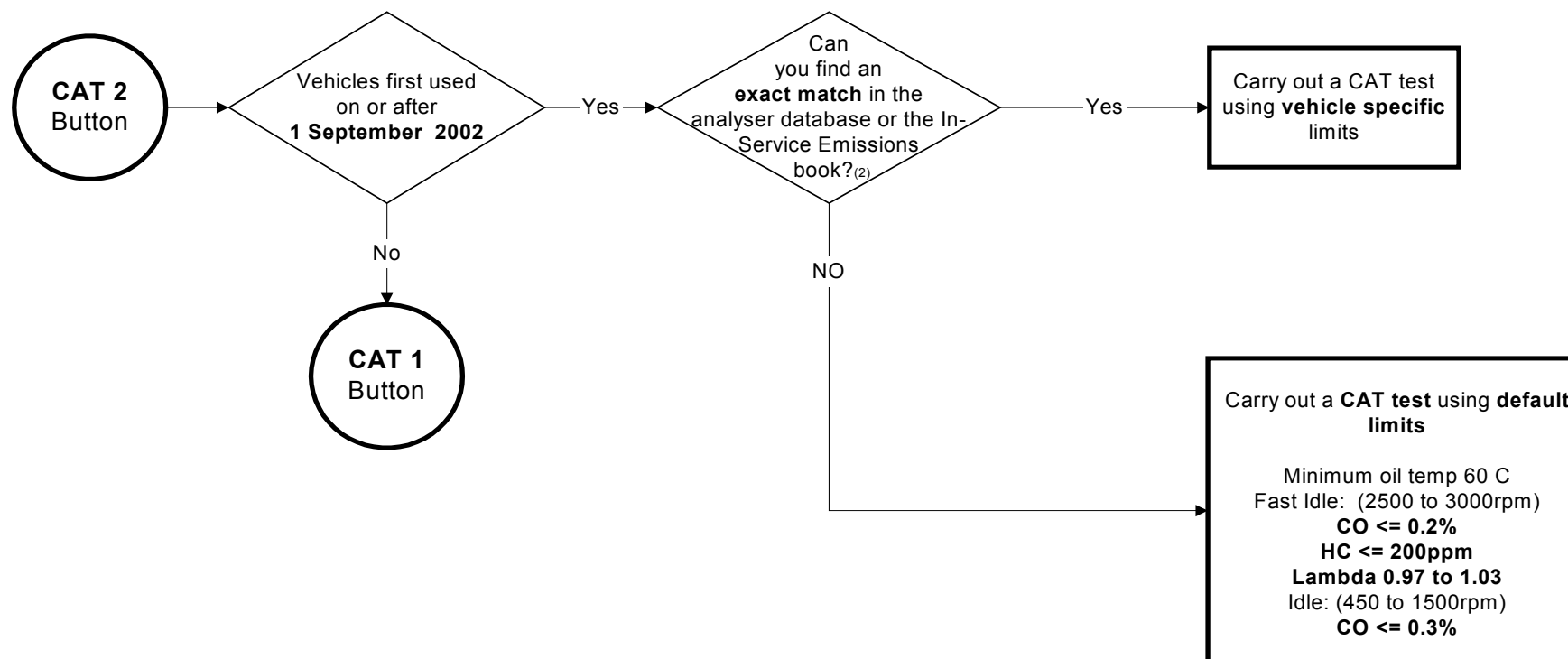


6.4 Exhaust Emissions - Spark Ignition – CAT Test 1 September 2002 onwards



NOTE 2. Exact Match:

To find an exact match in the current emissions data book, you will need the make, model and other data such as engine size, model code, engine code, VIN code or serial number.

If after normal cleaning and/or scraping processes a particular code is unreadable or inaccessible, carry on as if no exact match can be found. Test to default limits, carry out that test, but use the less demanding of either the default limits or the specific limits for any vehicle which is an exact match in everything but an unreadable code.