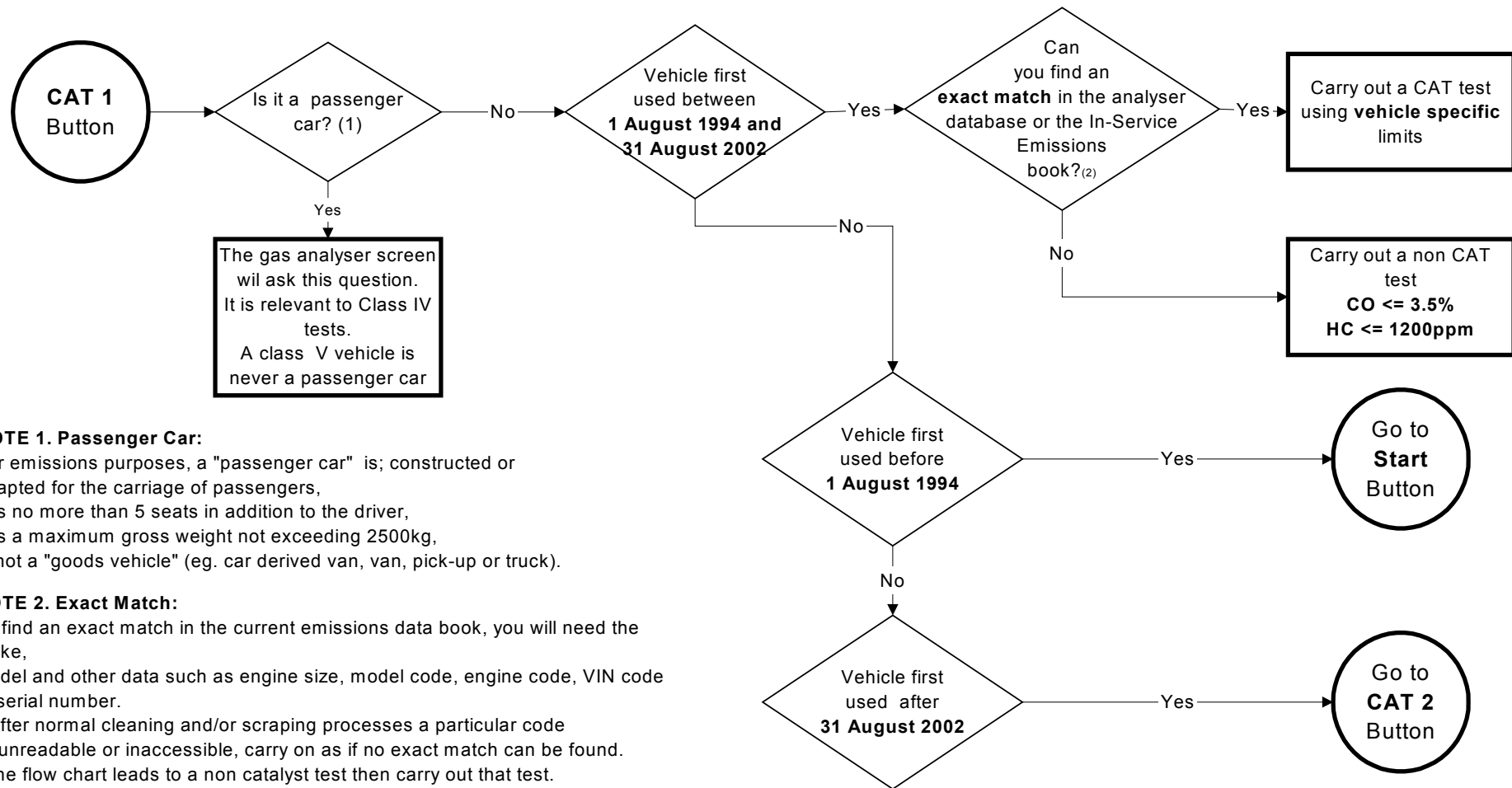


# 6.4 Exhaust Emissions - Spark Ignition – CAT Test 1 August 1994 to 31 August 02



**NOTE 1. Passenger Car:**

For emissions purposes, a "passenger car" is; constructed or adapted for the carriage of passengers, has no more than 5 seats in addition to the driver, has a maximum gross weight not exceeding 2500kg, is not a "goods vehicle" (eg. car derived van, van, pick-up or truck).

**NOTE 2. Exact Match:**

To find an exact match in the current emissions data book, you will need the make, model and other data such as engine size, model code, engine code, VIN code or serial number. If after normal cleaning and/or scraping processes a particular code is unreadable or inaccessible, carry on as if no exact match can be found. If the flow chart leads to a non catalyst test then carry out that test. If the flow chart leads to a catalyst test to default limits, then carry out that test, but use the less demanding of either the default limits or the specific limits for any vehicle which is an exact match in everything but an unreadable code.