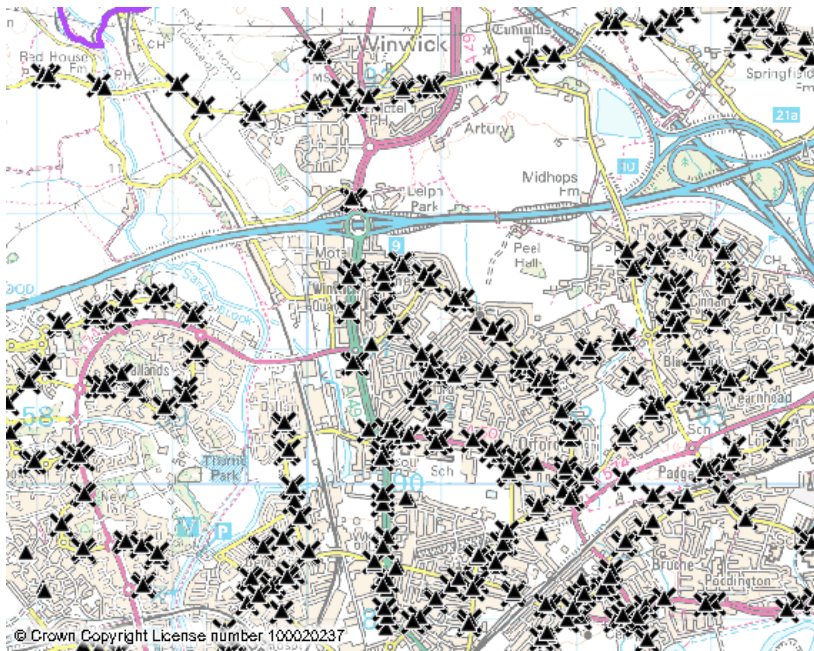


EBSR NEWSLETTER – Issue no. 6

THE NEW NaPTAN VIEWER

1 Background

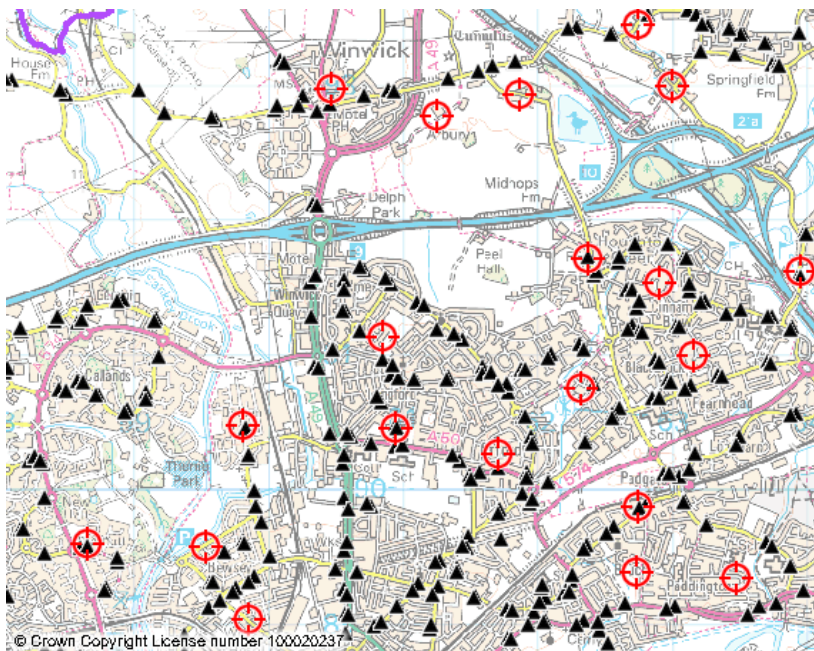
A new version of the NaPTAN Viewer was released recently. This version includes a number of improvements, one of the most useful being the option to switch off the display of DELETED NaPTANs.



2 The Display of DEL NaPTANs

The old Viewer was particularly cumbersome in areas where stops have been subject to wholesale changes over the years e.g. because of re-numbering, or because of service re-routings or town centre pedestrianisation.

In the old Viewer, the existence of a substantial number of DEL stops obscured the ACTIVE stops that are needed for coding services and for EBSR, and it was too easy to cause confusion between ACT and DEL NaPTAN records.



The new NaPTAN viewer provides the option to switch DEL NaPTANs on or off, whilst the symbol used for these records is now much less intrusive, being an open triangle with a red cross.

The effect of this is clearly shown in these “before” and “after” screenshots from an area with a large number of DEL NaPTANs.

3 Other Improvements

In addition to improving the clarity of maps in the Viewer, the new version also includes a number of other enhancements:-

- The display of the date on which the data was uploaded from the national database. This does not currently get displayed and users can never be sure if their latest NaPTAN upload will be included or not. This change ensures that users always know when the data was last updated
- The ability to either display or suppress stop names on maps. Another tool to reduce “clutter” on maps.
- More information is displayed about Locality details. The old system only provided the NatGazID for a locality; locality details are now provided in full
- Information on stop types is now displayed (e.g. HAR, MKD in addition to BCT, BCS etc.)
- Coach exchange points (CEPs) are shown
- The stop name is shown in the same format as it appears in Transport Direct’s gazetteers. This will allow users to assess if the name of the stop used in public systems is a logical one for that stop
- A change in the display of the stop details in order to provide a more logical structure to the stop information

A new version of the NaPTAN Viewer Guidance Notes which illustrates and explains these new features in more detail is available at:-

<http://www.dft.gov.uk/public-transportdatamanagement/ng.htm> (in the Documents Section)

4 How do I Get Access to the System?

If you don’t already have access to the NaPTAN Viewer it is possible to request it. The NaPTAN Viewer is available to all local authority and bus operator staff who need information about NaPTAN points in England, Scotland and Wales. If you are not already a registered user, you can request a user name and password from TDPortal.Operations@dft.gsi.gov.uk

5 How Do I Get Further Help and Advice?

For further help or advice, please email Transport Direct at ebstr@dft.gsi.gov.uk.

*Kieran Holmes
December 2009*