

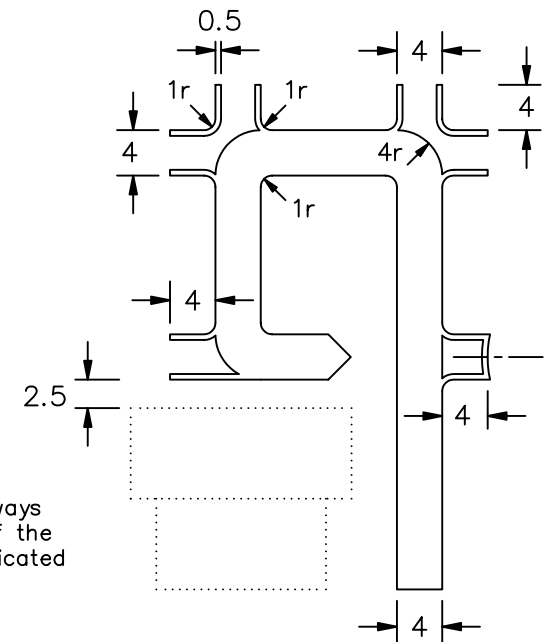
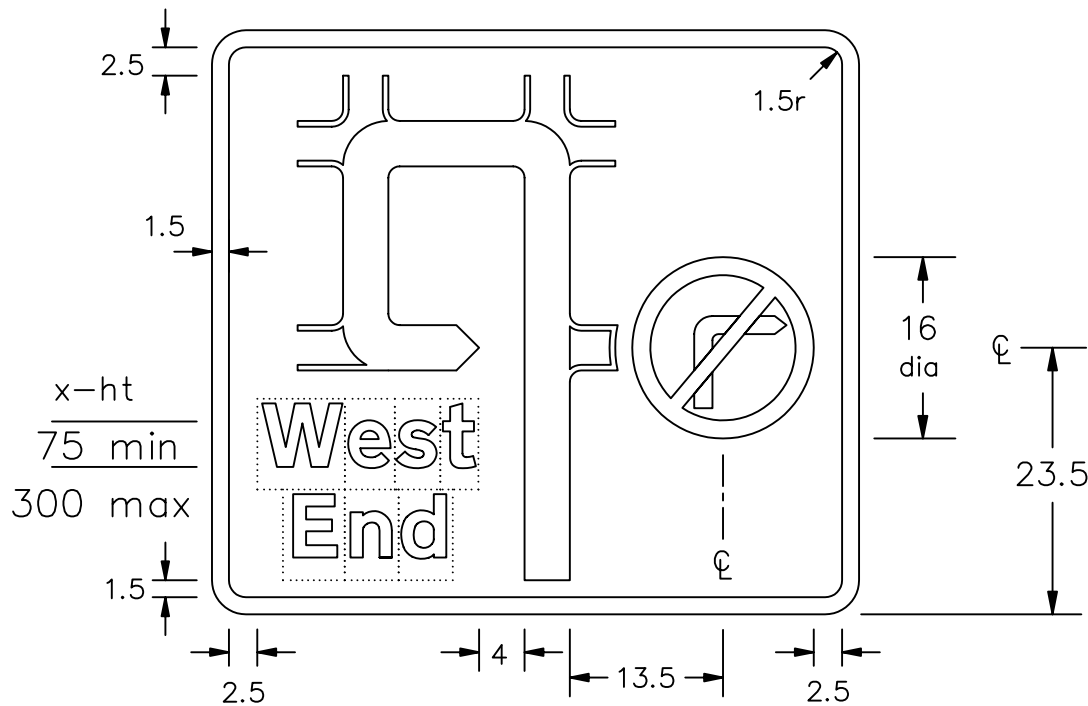
Drawing No.  
P 2124

Related Drawing  
P 612

Before using this drawing, confirm that it has not been superseded.

© CROWN COPYRIGHT

- NOTES: -
1. The legend is from the Transport Heavy alphabet at the x-heights shown.
  2. The tile outlines do not form part of the sign.
  3. The roundel is proportional to the one shown on drawing P 612 and may be varied to the one shown on drawing P 613.
  4. COLOURS : Background ----- WHITE  
Route symbol, Border & Legend ---- BLACK  
  
Prohibitory roundel as shown on P 612
  5. DIMENSIONS : x-heights are in millimetres, other dimensions are in stroke widths. (4sw = x-height)



This drawing should be used in conjunction with the Traffic Signs Manual Chapter 7

Note: -  
The route symbol is always 4sw wide irrespective of the status of the route indicated

P2124

Department for  
**Transport**

Title: Non-Primary Route Directional Sign  
DIRECTION TO DESTINATION SHOWN  
AVOIDING PROHIBITED MOVEMENT

Issue: Date: Drawn by:  
A: 15.7.94 S.P.  
B: 3.9.04 Approved by:  
C: R.M.

Dimensions:  
SEE  
NOTE 5

Drawing No.  
P 2124