

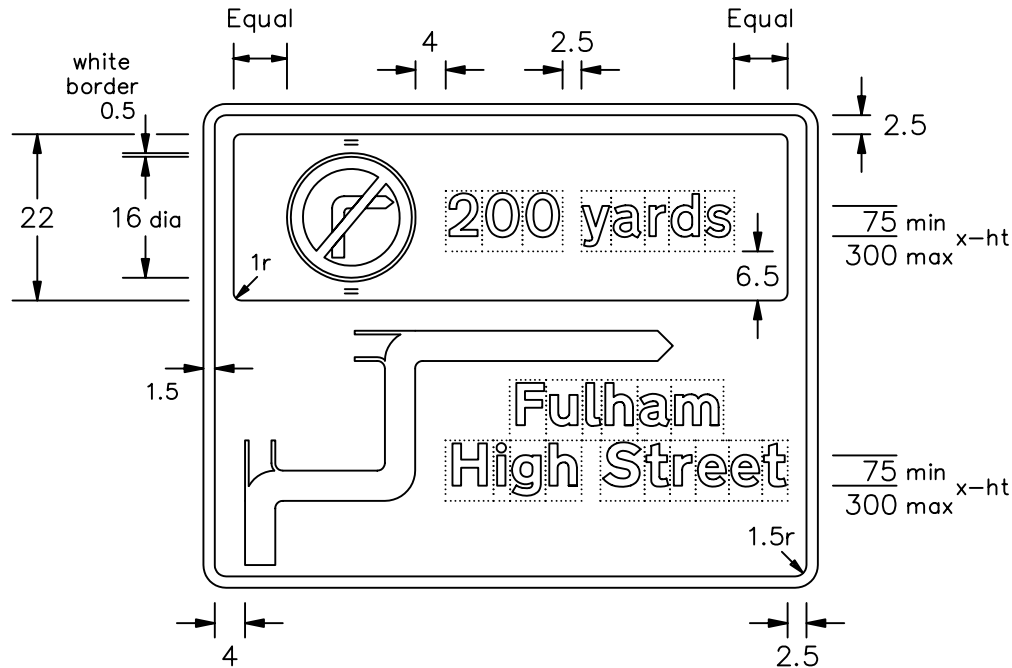
Drawing No.  
P 2123

Related Drawing  
P 612

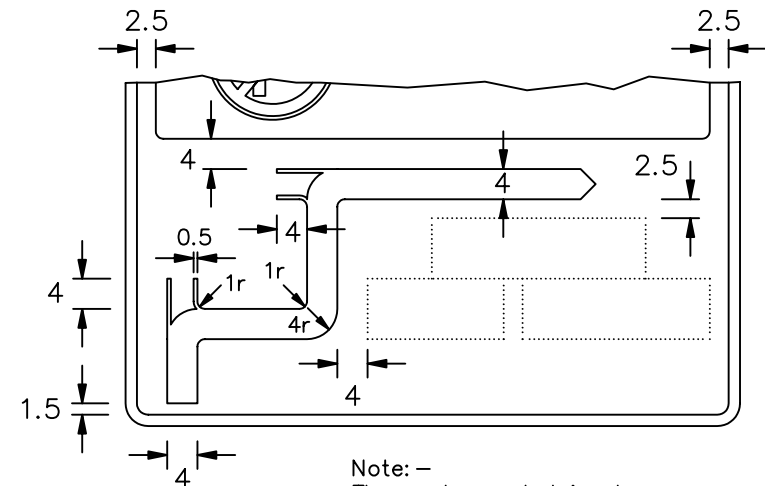
Before using this drawing, confirm that it has not been superseded.

© CROWN COPYRIGHT

- NOTES: 1. The legend in the top panel is from the Transport Medium alphabet and from the Transport Heavy alphabet beneath the route symbol, at the x-heights shown.
2. The tile outlines do not form part of the sign.
3. The roundel is proportional to the one shown on drawing P 612 and may be varied to one shown on drawing P 613 or P 614.
4. COLOURS : Top Panel Background ----- BLUE  
 " " Legend ----- WHITE  
 Main Sign Background ----- WHITE  
 " " Legend ----- BLACK  
 Route symbol & Border ---- BLACK
- Prohibitory roundel as shown on P 612 with WHITE border added
5. DIMENSIONS : x-heights are in millimetres, other dimensions are in stroke widths. (4sw = x-height)



This drawing should be used in conjunction with the Traffic Signs Manual Chapter 7



Note: -  
The route symbol is always 4sw wide irrespective of the status of the route indicated

P2123

Department for  
**Transport**

Title: Non-Primary Route Directional Sign  
DISTANCE TO PROHIBITED MOVEMENT  
AND DIRECTION TO DESTINATION

Issue: Date: Drawn by:  
A: 15.7.94 S.P.  
B: 3.9.04 Approved by:  
C: R.M.

Dimensions:  
SEE  
NOTE 5

Drawing No.  
P 2123