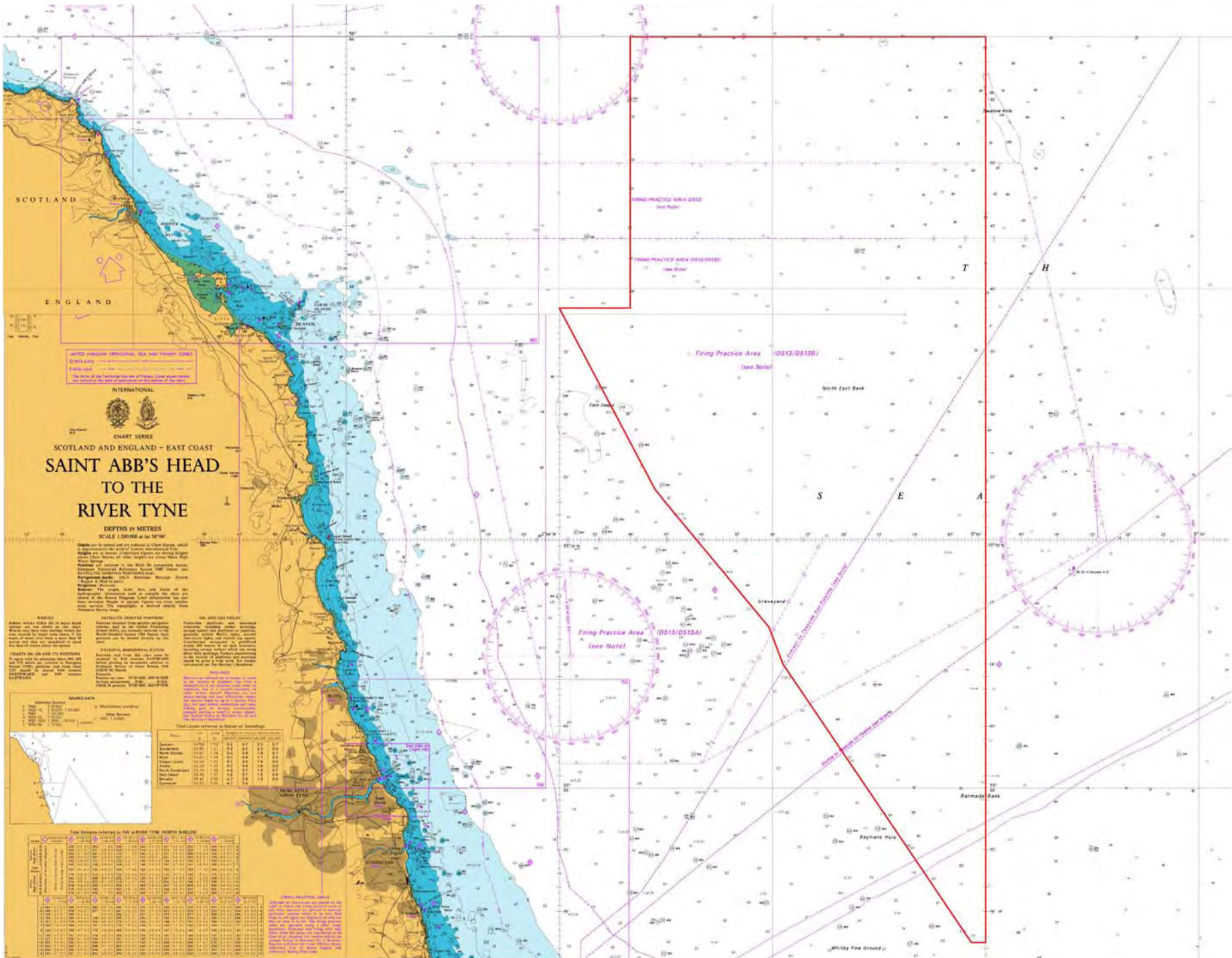


HI 1153

Baymans Hole to Dunbar

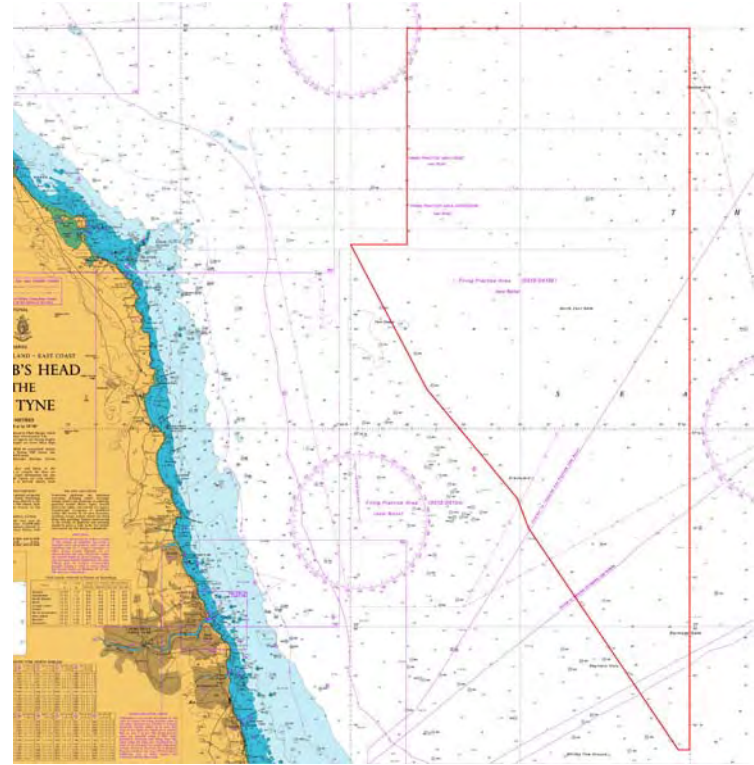
David Buxton

Project Manager, Gardline Hydro



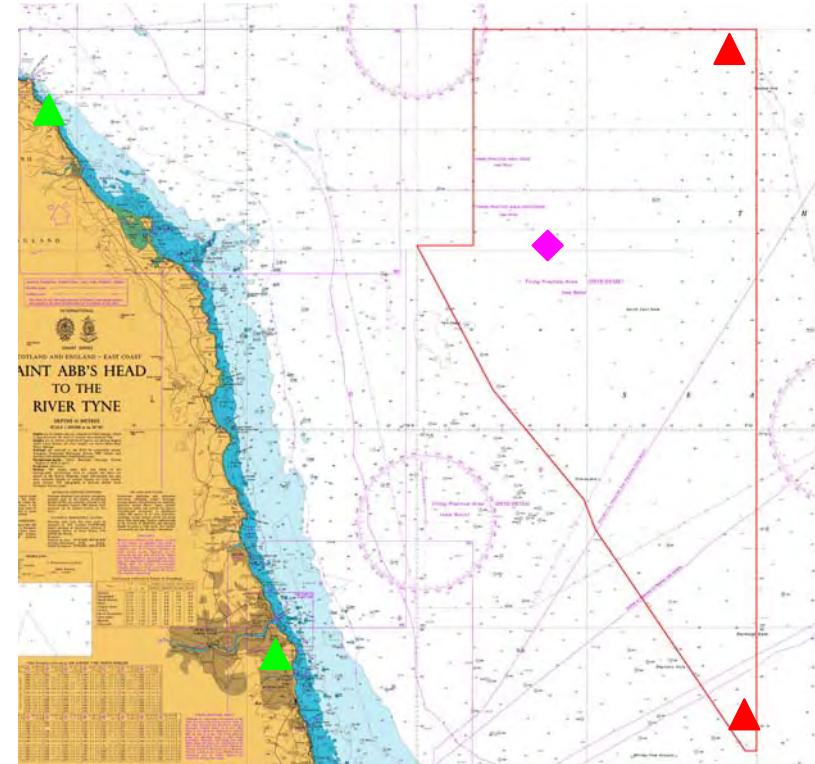
HI 1153

- 5039 km²
- 86 wrecks listed
- 203 samples
 - 5km grid
 - 10% retained
- Estimated 20,000 line km
- Source Data – miscellaneous soundings



HI 1153

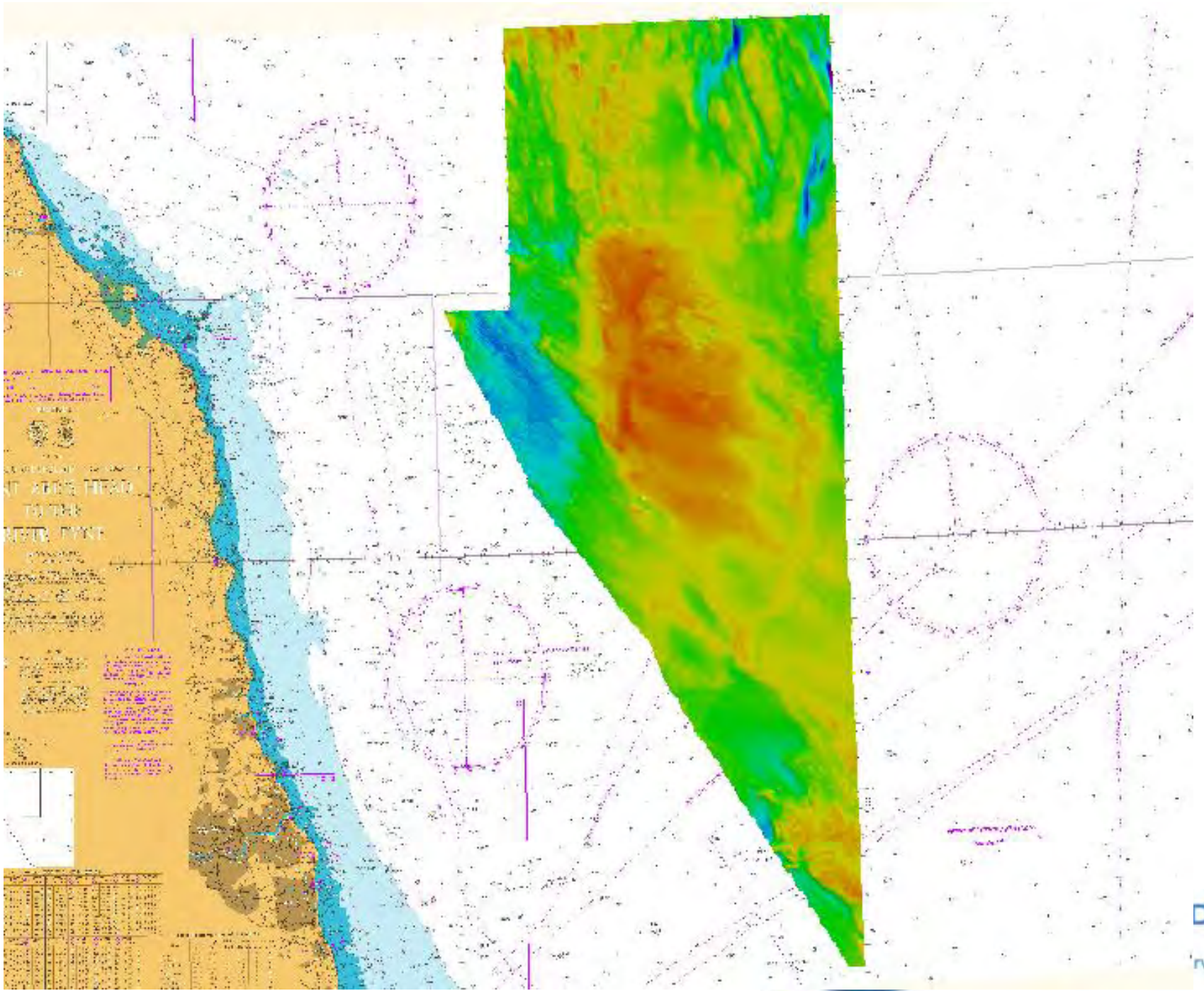
- Onshore Tide Gauges
 - Sunderland
 - Eyemouth
- Offshore Tide Gauges
- ADCP
- Additional Tasks
 - VORF Validation
 - ADCP/Drogue Comparison

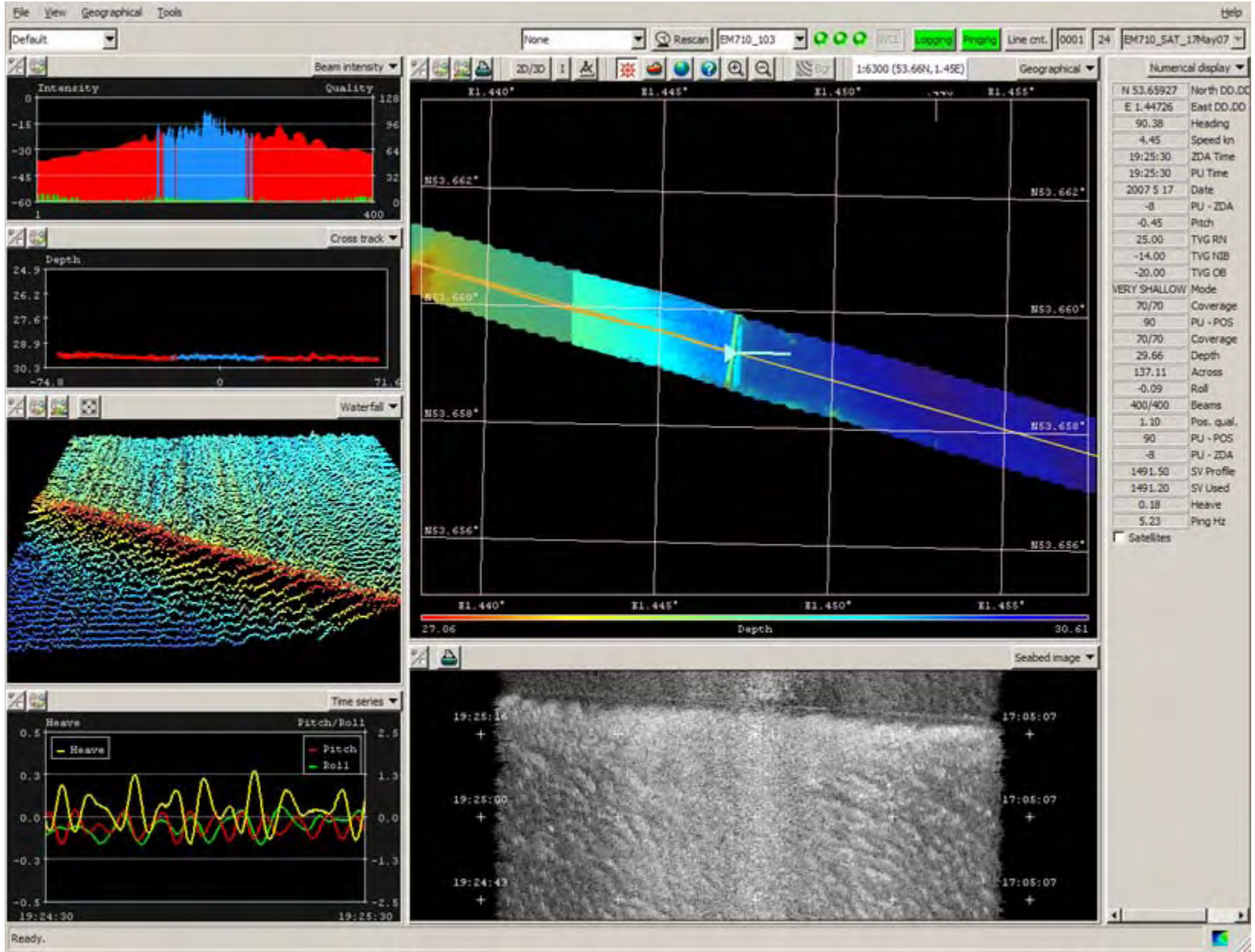


Vessels & Equipment



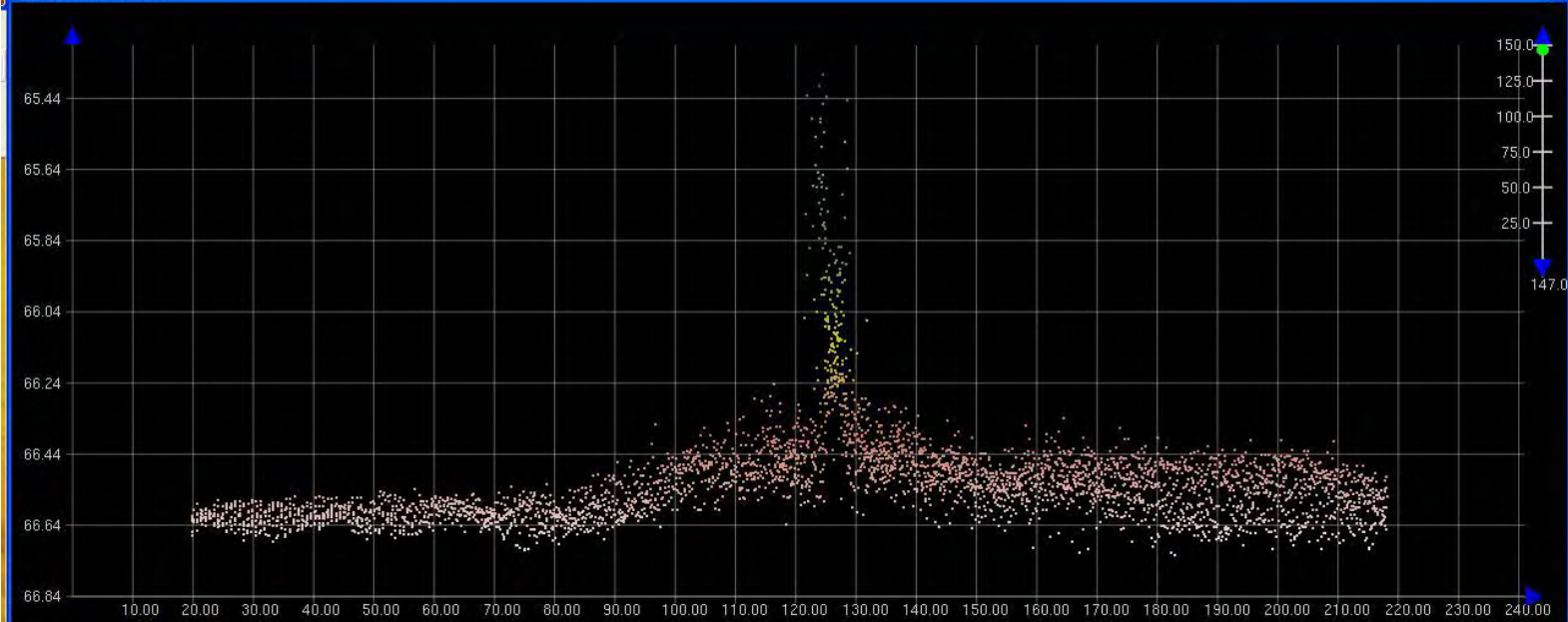
- Both equipped with modern MBES
 - EM710 with multi-ping
- Magnetometer
- Side-scan Sonar



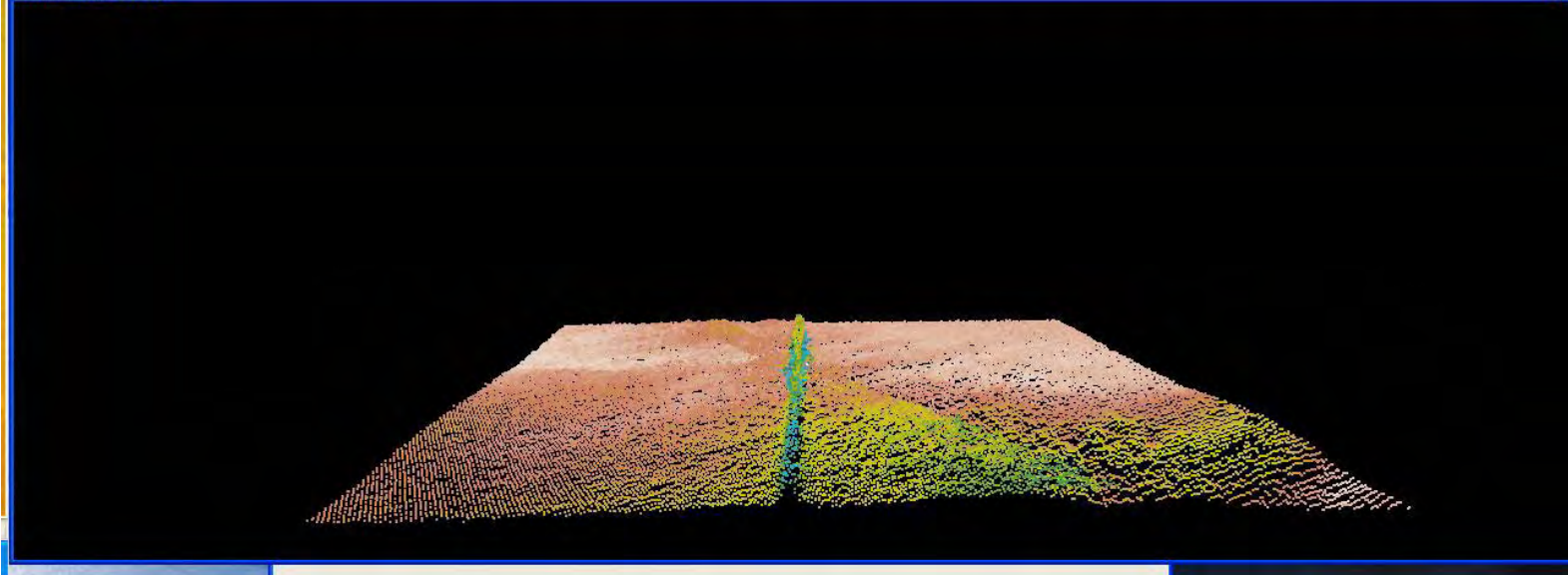


GARDLINE HYDRO
A Division of Gardline Geosurvey

Subset Editor - 2D View

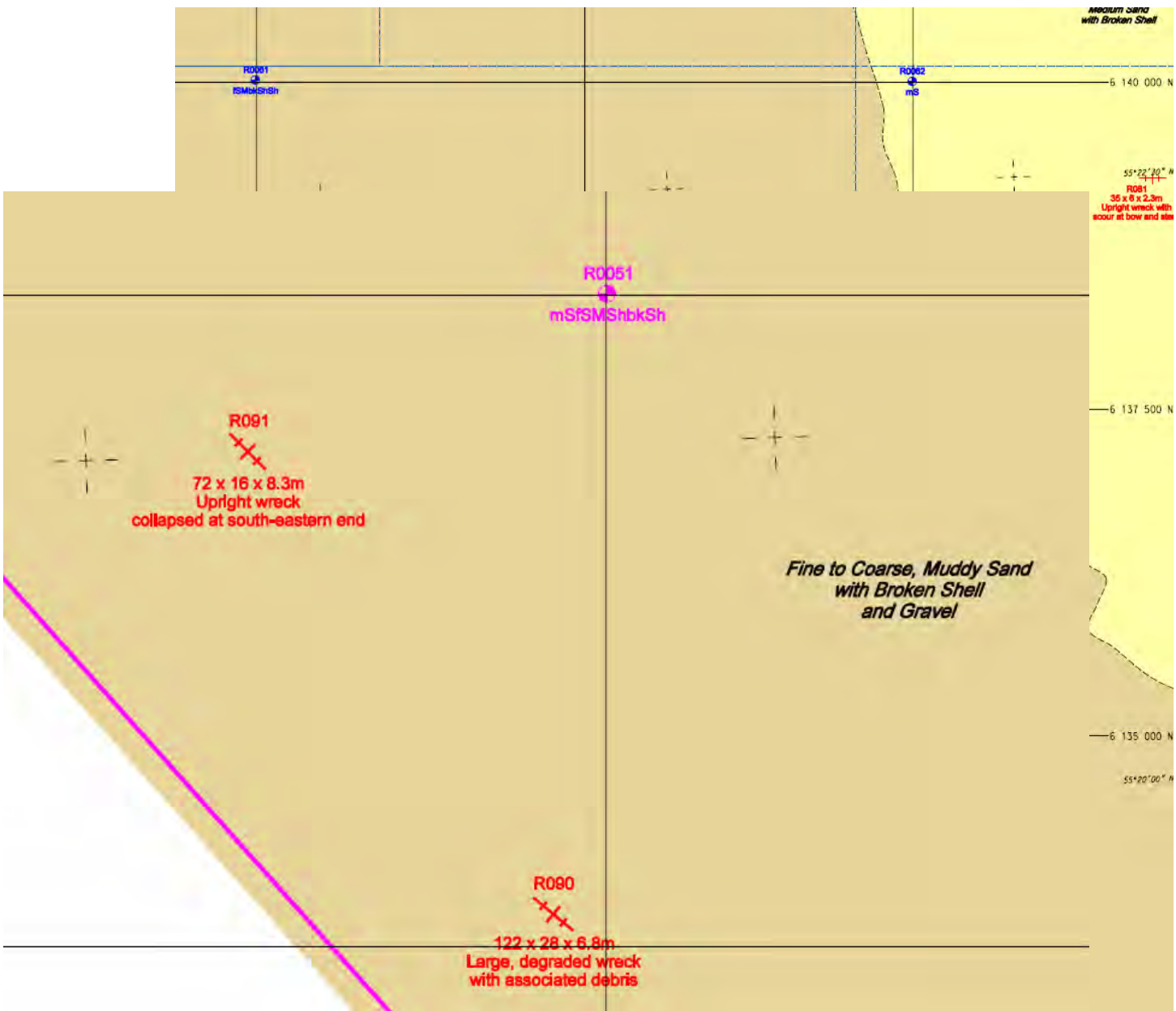


Subset Editor - 3D View

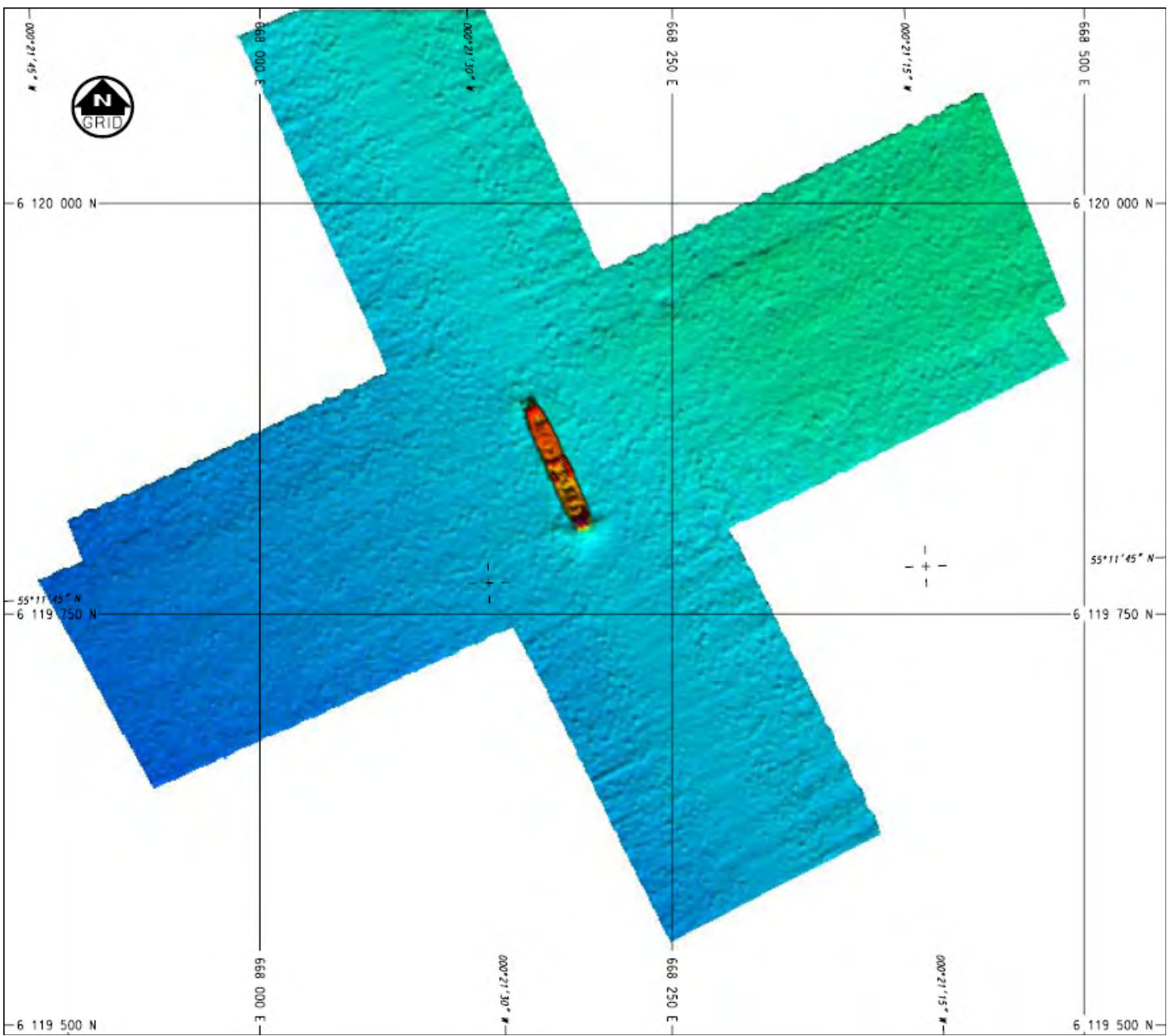


GARDLINE HYDRO

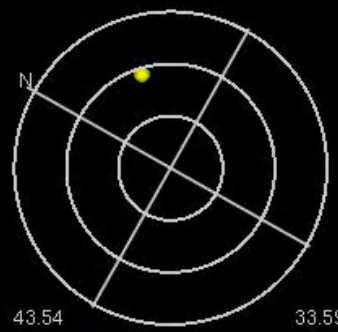
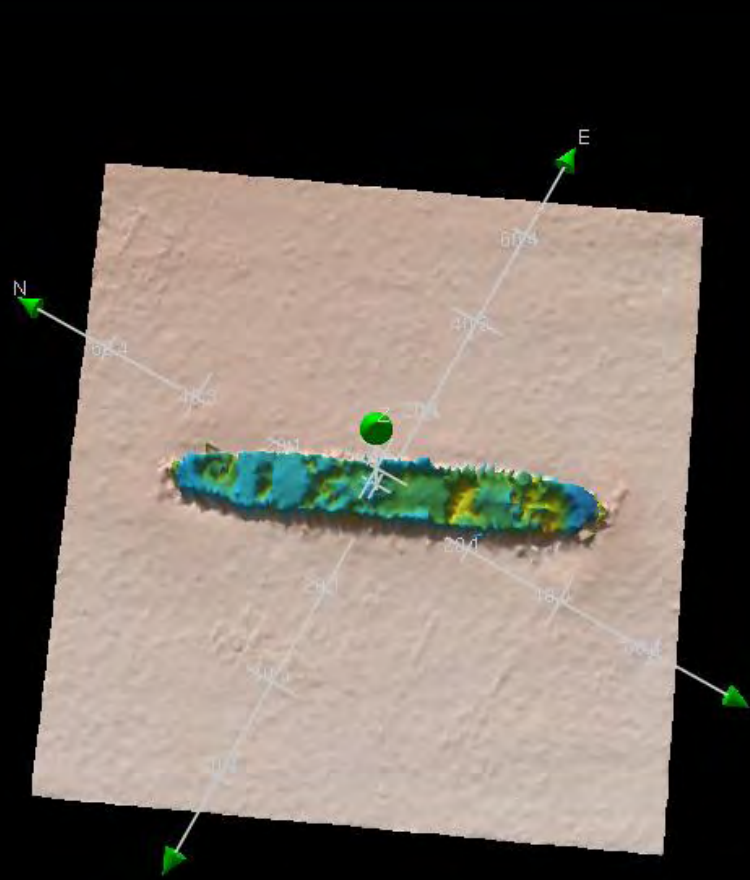
A Division of Gardline Geosurvey



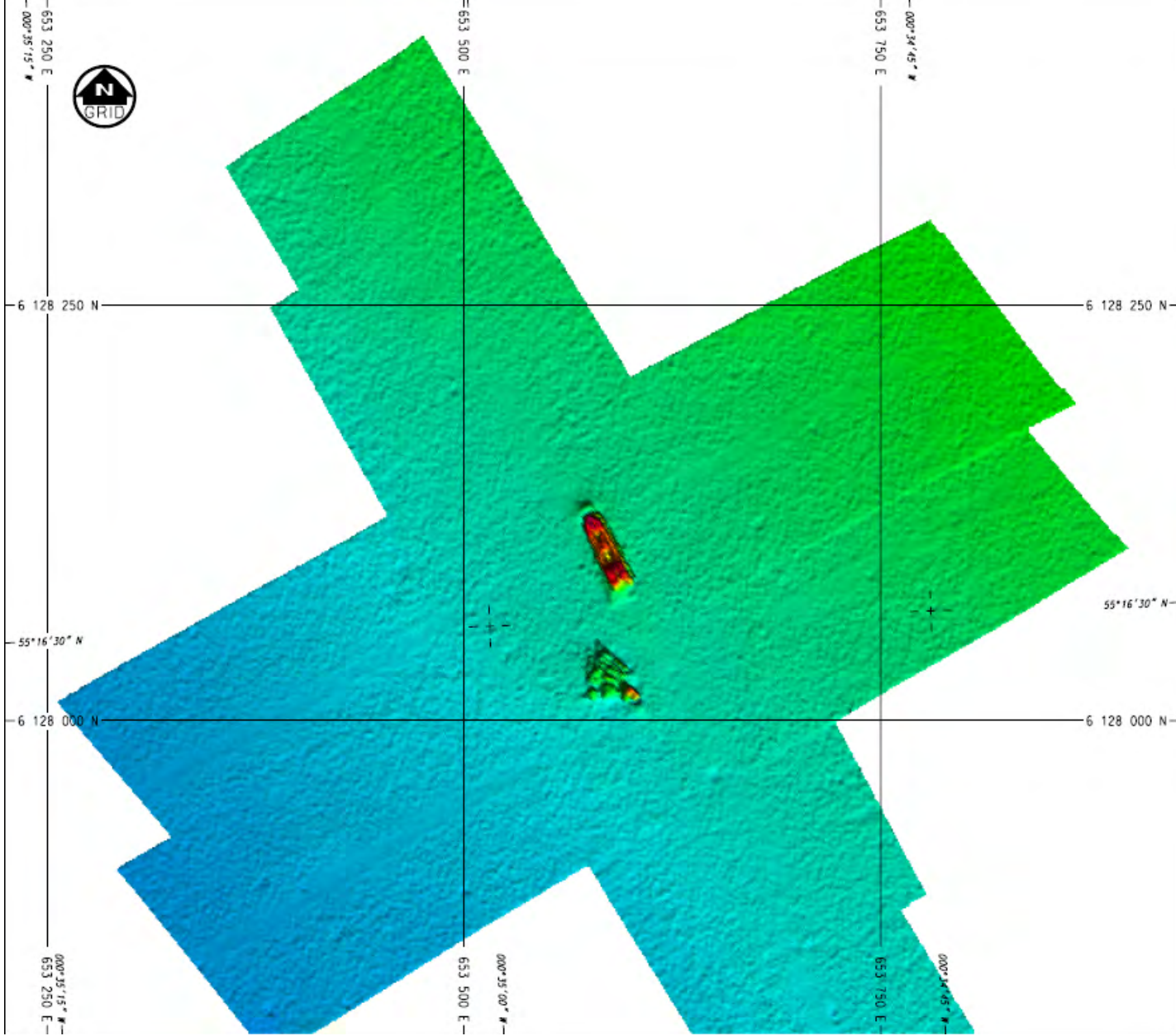
GARDLINE HYDRO
A Division of Gardline Geosurvey



GARDLINE HYDRO
A Division of Gardline Geosurvey

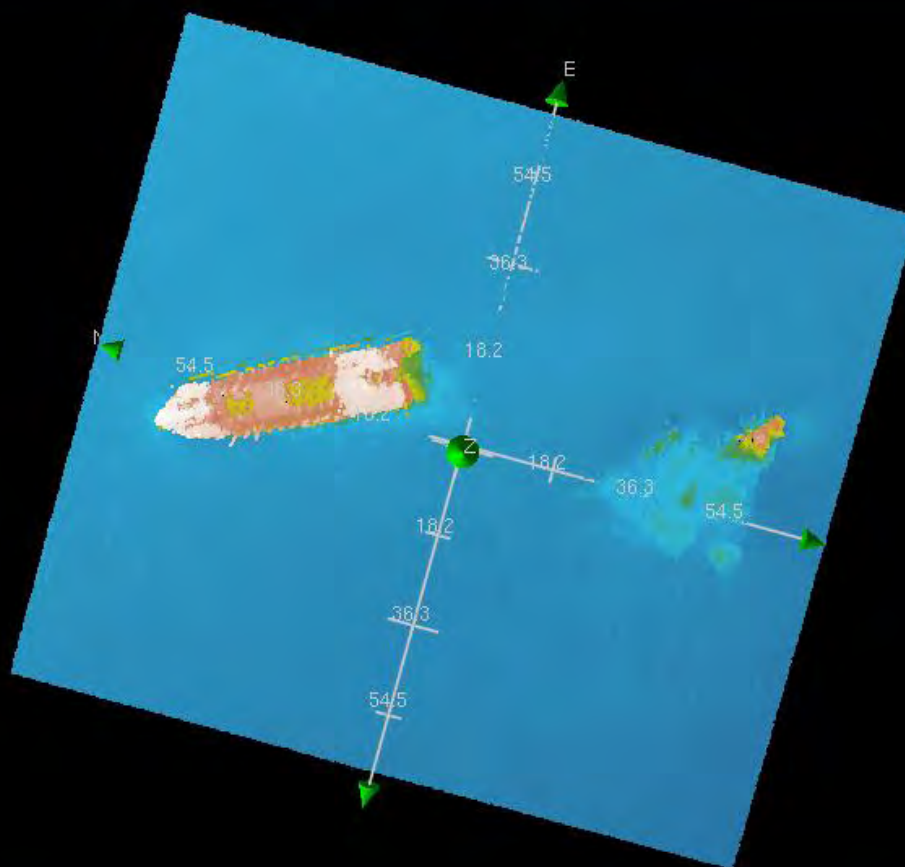


GARDLINE HYDRO
A Division of Gardline Geosurvey



GARDLINE HYDRO

A Division of Gardline Geosurvey



GARDLINE HYDRO

A Division of Gardline Geosurvey

ADCP Deployment



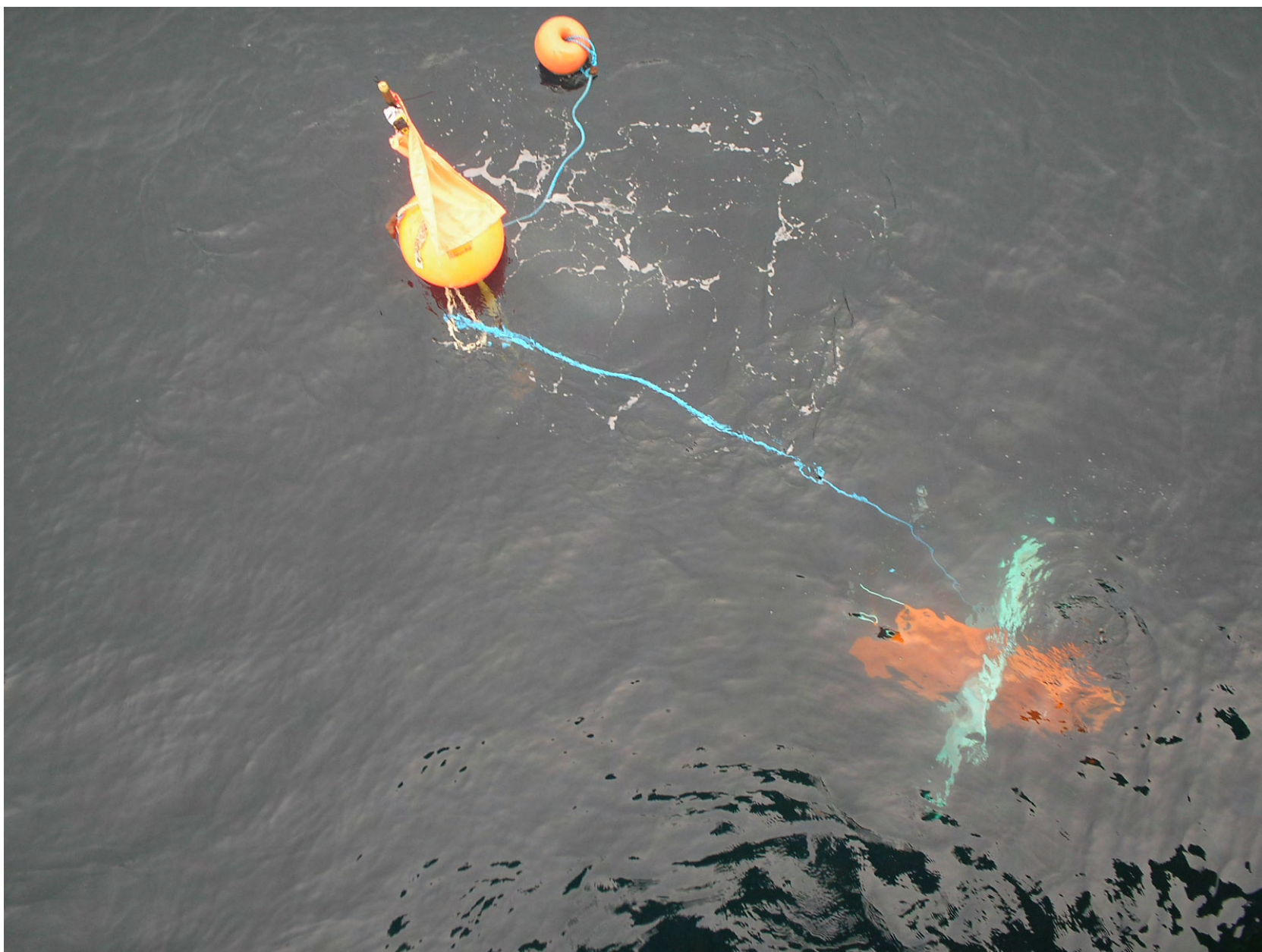
ADCP in buoy with
Argos Beacon

Acoustic Release



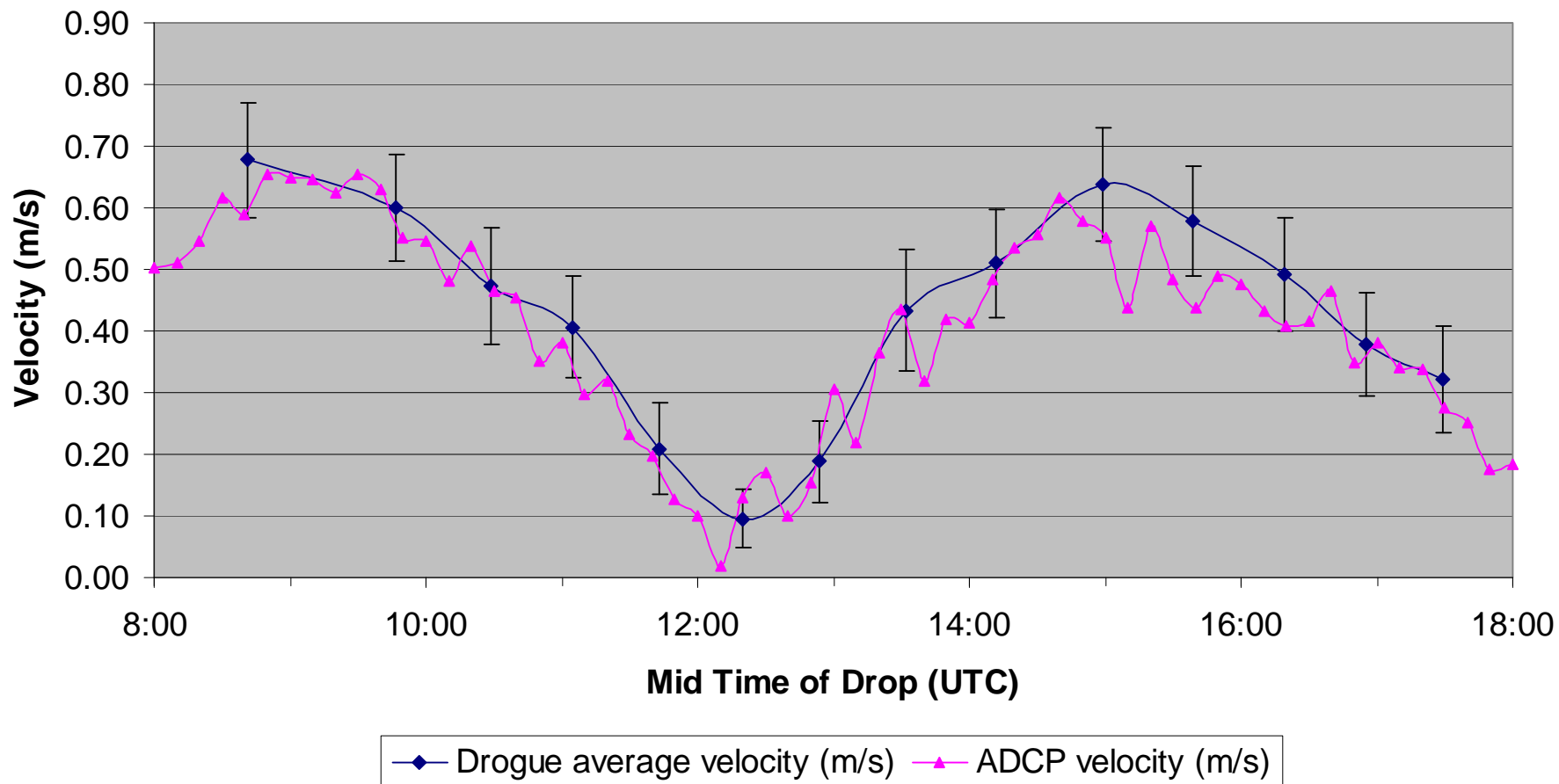
GARDLINE HYDRO

A Division of Gardline Geosurvey



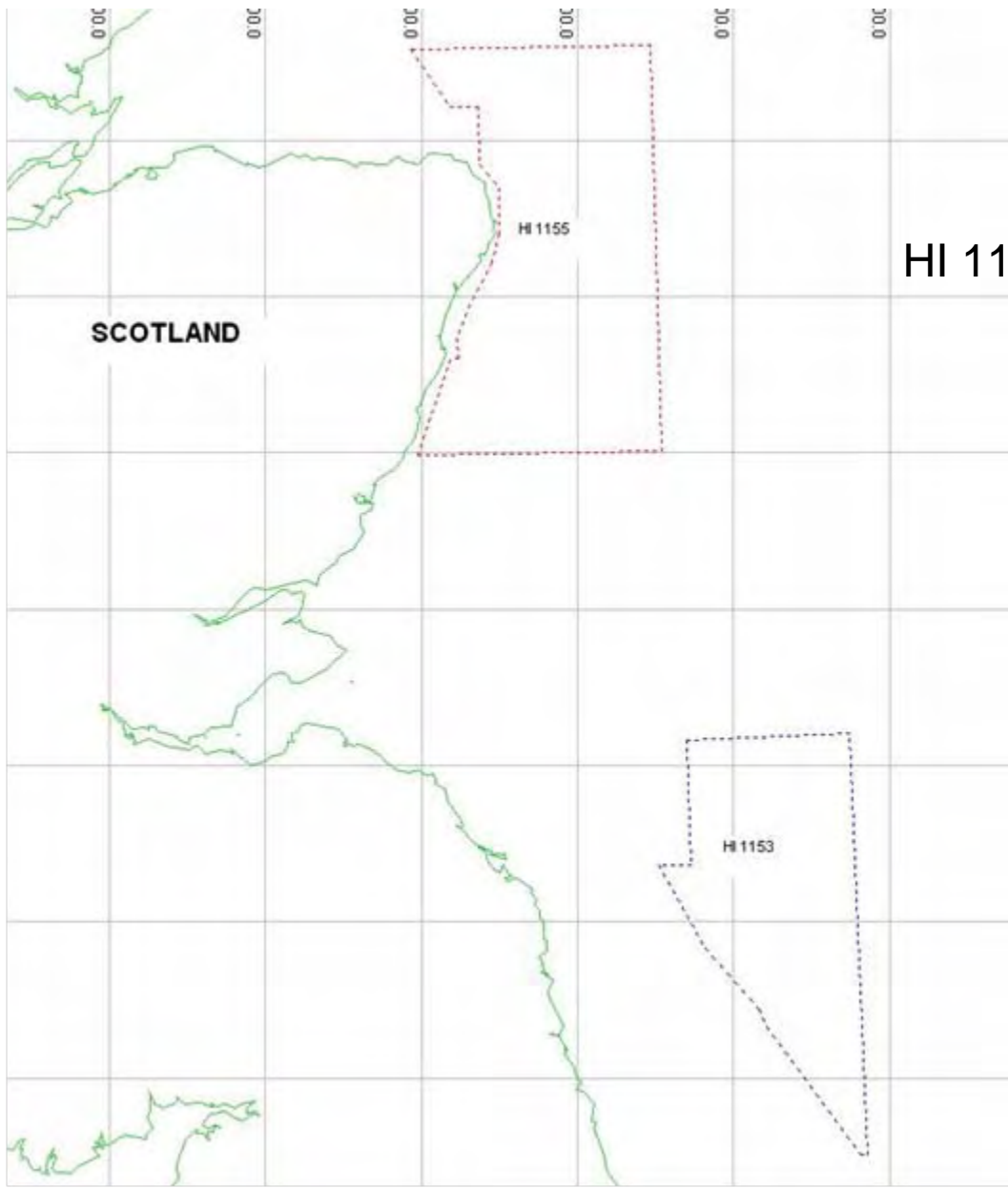
GARDLINE HYDRO

A Division of Gardline Geosurvey



HI 1153

- 22,831 Line km
- 203 Samples
- 86 wrecks to be investigated, 122 actual wrecks investigated
- 35 H102 for new wrecks
- 460 Gb Simrad data, 660Gb Caris data
- 89 operational days



2009
HI 1155 – Todhead Point to Bosies Bank