

Future survey data gathering programmes at The Crown Estate

Christine Sams, Technical Manager

25th February 2009

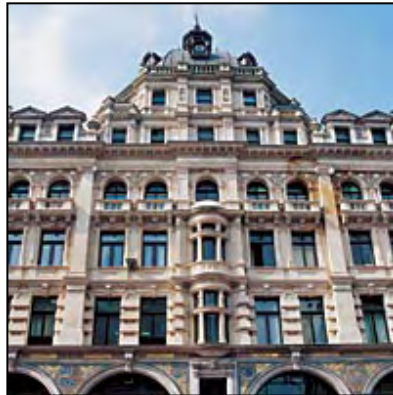


Contents

- Overview of The Crown Estate
- Projects on the Marine Estate
- Offshore surveys for Round 3 and the role of The Crown Estate
- Survey requirements and locations
- Forward programme

The Crown Estate

- Urban Estate - Substantial blocks of commercial, retail and residential property
- Rural Estate (inc. Windsor) - Approximately 113,100 ha agricultural land, 16,900 ha forestry and 22 minerals leases
- Marine Estate – c.55% of UK foreshore, almost all seabed to the 12 nautical mile territorial limit & rights to natural resources of UK Continental Shelf (200 nautical miles)
- The Renewable Energy Zone (REZ)



The Crown Estate

- Crown Estate Act 1961
- Three core values:
Commercialism, Integrity and Stewardship
- Landowner not regulator
- Required under statute to actively manage the marine estate in a sustainable manner
- New technology constantly bringing new opportunities
- But also greater pressure on resources, space and environmental protection
- Our responsibility to balance competing demands



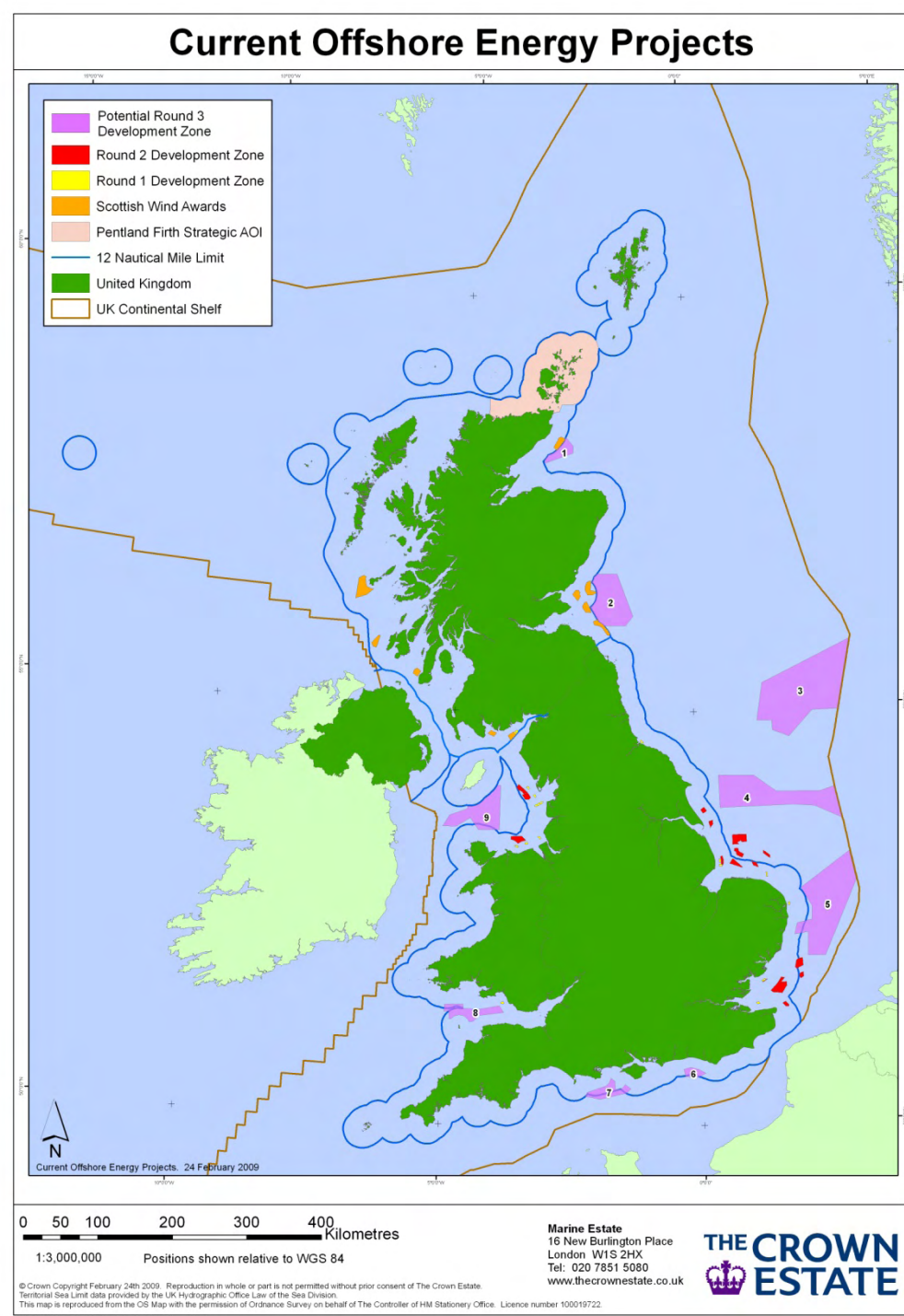
Activities on the Marine Estate

- Marina developments
- Aggregate licences
- Aquaculture
- Gas storage (Carbon and Natural Gas)
- Renewable Energy
 - Wave and Tidal
 - Offshore Wind



Round 3

- Change in approach
 - Lessons from R1 & R2
 - Cumulative impacts & stakeholder issues
 - Co-development up to consent
 - Enabling works to facilitate
- Objectives
 - Speedy, reliable delivery of 25GW
 - Foster growth of the industry
- Zonal development
 - Total area 26,630 Sq km
 - 3000 – 7000 turbines
 - Timeline



Why is The Crown Estate involved in geophysics?

Geophysics is required in the front end development of Round 3 to select sites within zones, and to provide information to the following activities;

- Coastal processes
- Location of sabellaria reefs
- Location of wrecks, areas of archaeological interest
- Establishing location of meteorological masts to be installed during the development phase
- Establishing input data into the geotechnical survey scope
- Establishing design & optimal layout of the wind farm including position of structures and cable routes



Data requirements

Typical survey requirements;



- Seabed feature mapping i.e. debris, maritime archaeology, seabed texture & type
- Bathymetry to establish seabed depth profile
- Sub bottom profiling to establish depth of layers beneath seabed
- Magnetometer to establish location of metallic contacts such as wrecks and Unexploded Ordnance
- Grab and core sampling to confirm shallow soils information
- Waves and currents

2009 Programme

- The Crown Estate will commission a competitive tender process to place a minimum of 2 framework agreements for the provision of geophysical surveys for R3
- Develop the capability to start survey work in 2009
- Generate value by
 - Maintaining an overview of all the zone requirements
 - Create efficiencies through reduced mob and de-mob frequencies and through standardised specifications and approach
 - Single point to manage stakeholder interfaces and consenting requirements
- Key dates
 - Pre-qualification
 - Issue ITT mid-March
 - Aiming to place contracts by end May

Further information

Website: www.thecrownestate.co.uk

Christine.Sams@thecrownestate.co.uk

Mark.Lawrence@Rpsgroup.com