

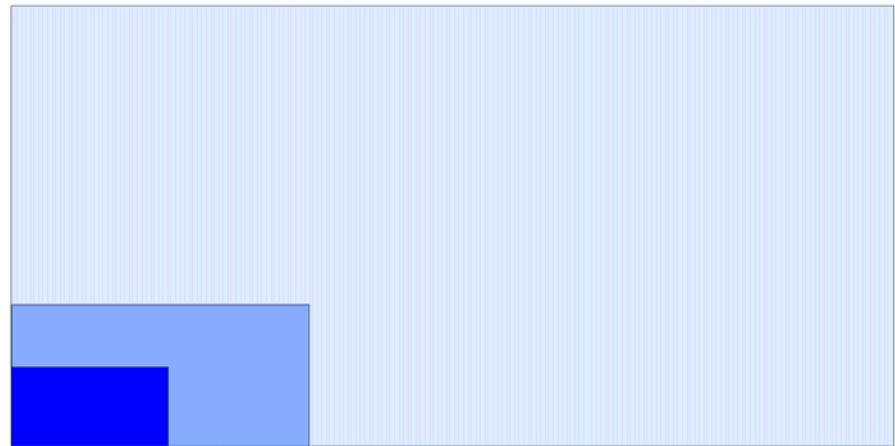
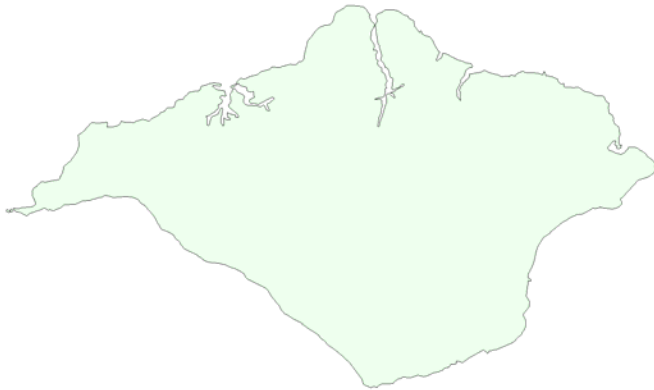


Regional Environmental Assessment (REA) & Regional Environmental Characterisation (REC)

Mark Russell

British Marine Aggregate Producers Association

Scale of UK marine aggregate activity



Isle of Wight – 400km²

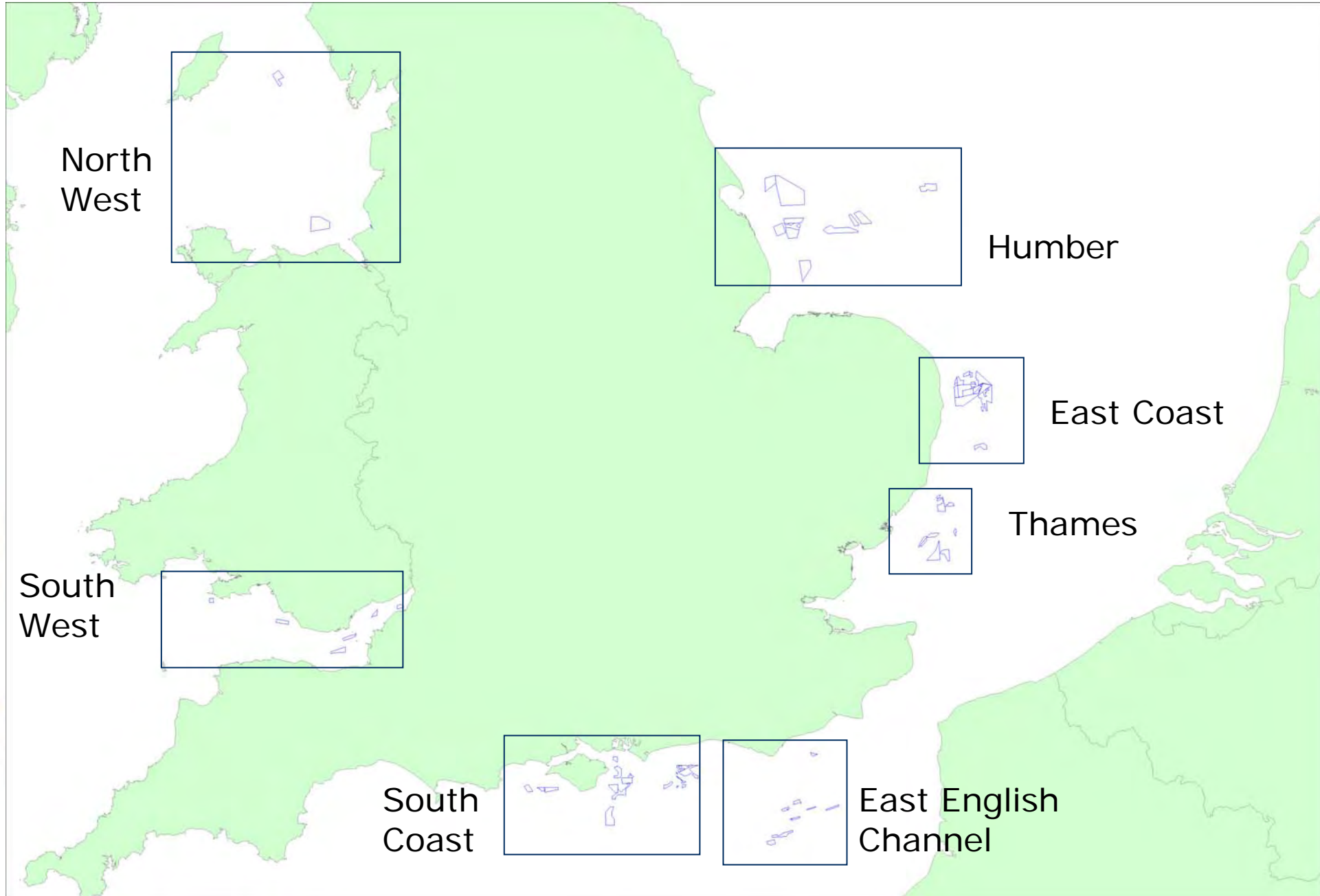
Licensed area – 1344km²

Dredged area – 135km²

Intensively dredged area – 49km²

Prospecting/application areas represent a further 1900km²

Extent of UK marine aggregate interests

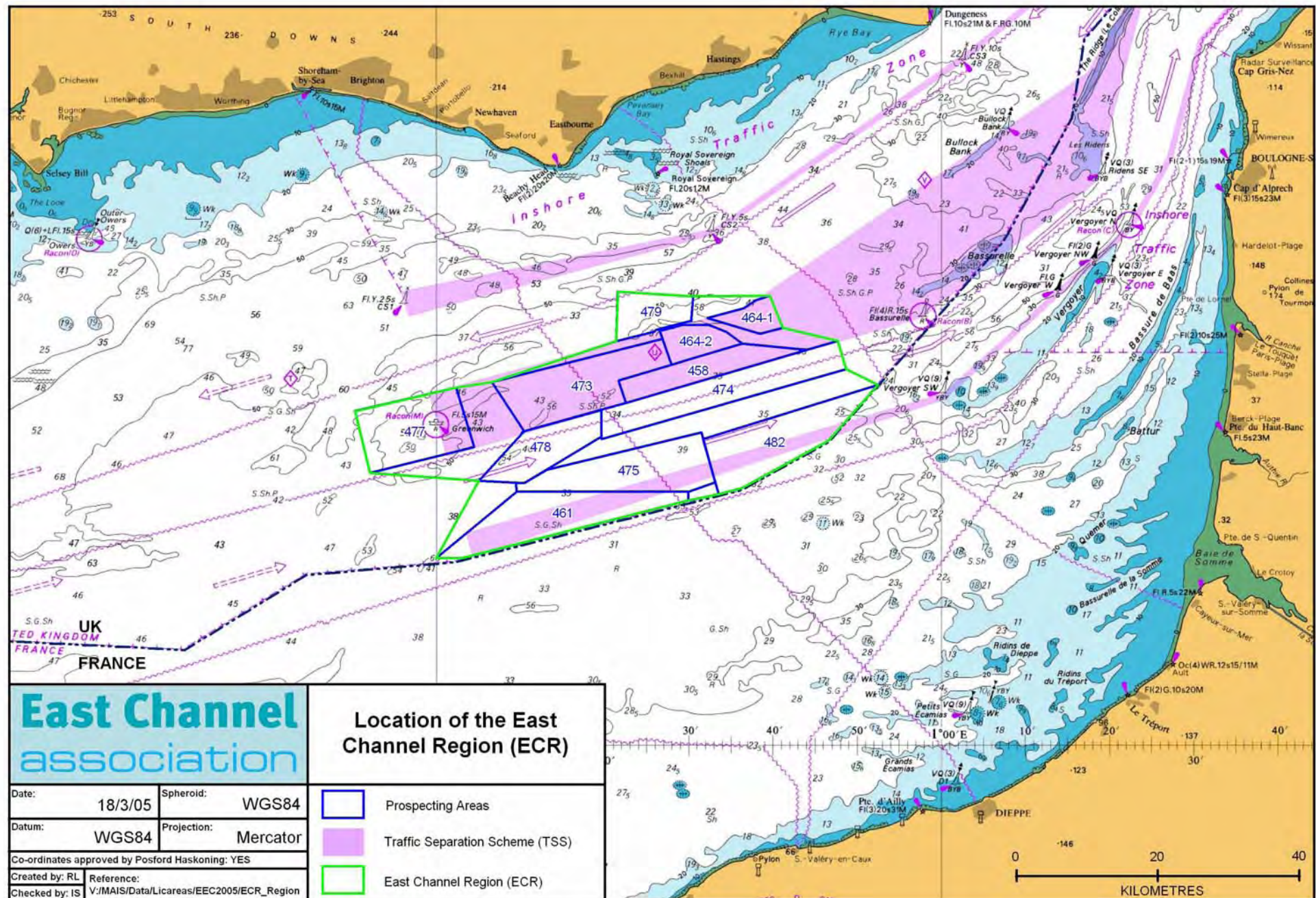


Regional Environmental Assessment

Synergies in what industry & regulators require

- Identify, assess and resolve regional scale cumulative & in combination issues
- Reduce duplication of effort
- Improved robustness and consistency
- Understand, plan and manage workload more effectively

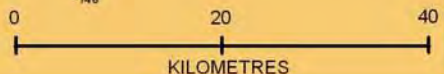
REA = Win/Win for industry & regulators



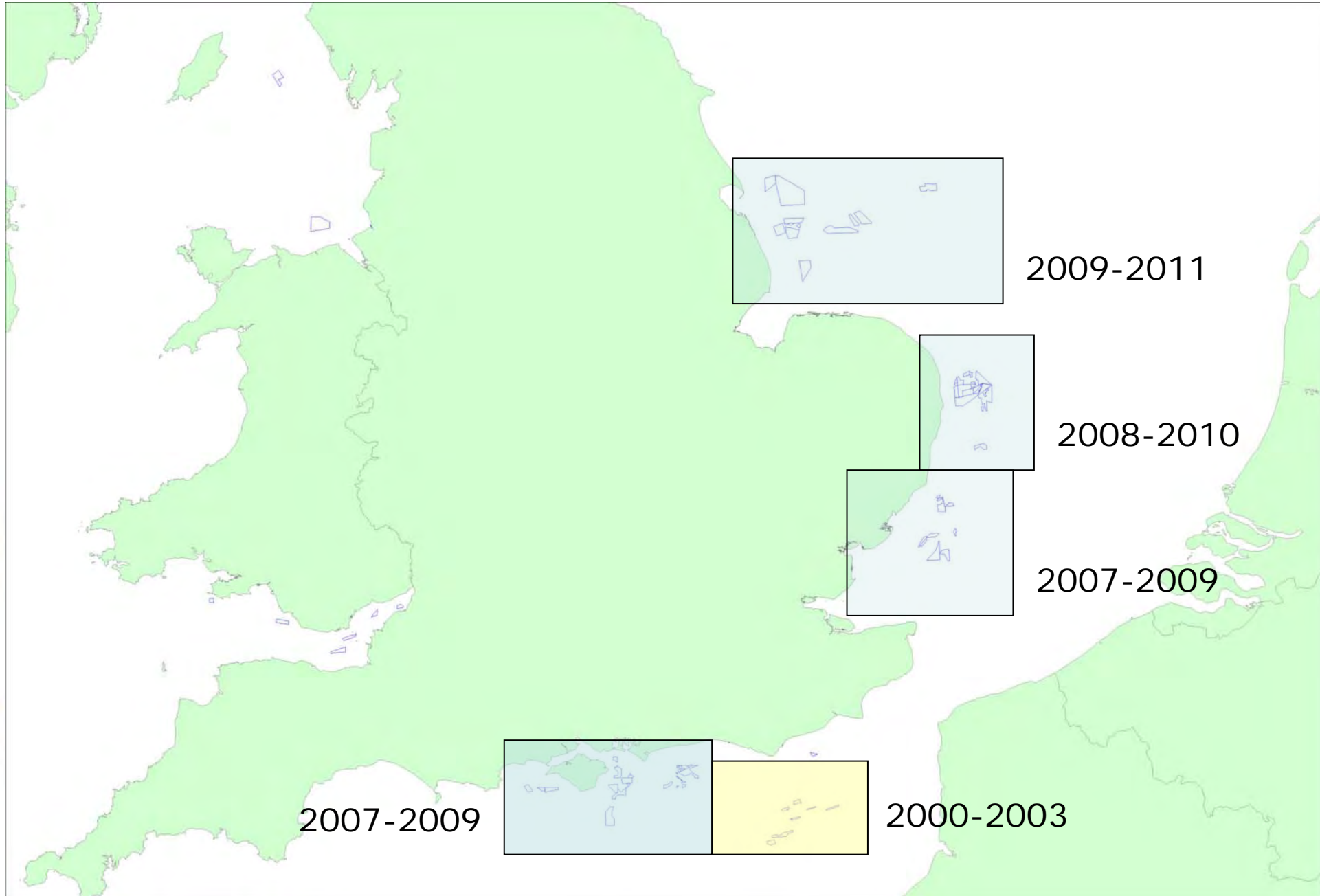
East Channel association

Location of the East Channel Region (ECR)

- Prospecting Areas
- Traffic Separation Scheme (TSS)
- East Channel Region (ECR)



Industry REA Programme

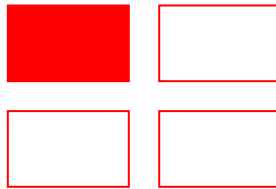


How to provide confidence?

Increasing spatial scale/Decreasing data resolution →



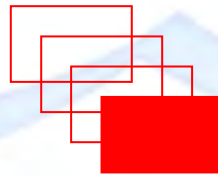
Site specific



Cumulative



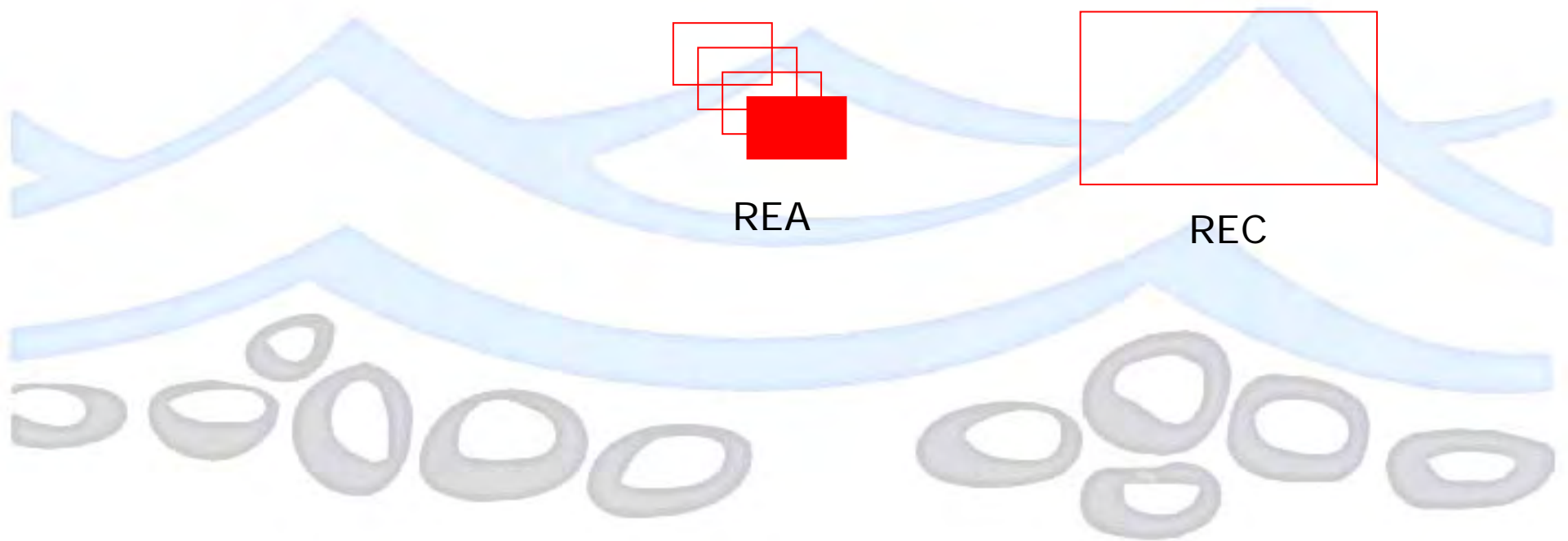
Regional context



REA



REC



REA versus REC

Regional Environmental Assessment (REA)

Industry funded programme
Focussed description of area
potentially effected by aggregate
extraction
Provides impact assessment
benchmark
Specific impact assessment end use

Regional Environmental Characterisation (REC)

Government funded programme
Broadscale environmental
characterisation of wider region
Provides general environmental context
Wider potential end use

Synergies between the two

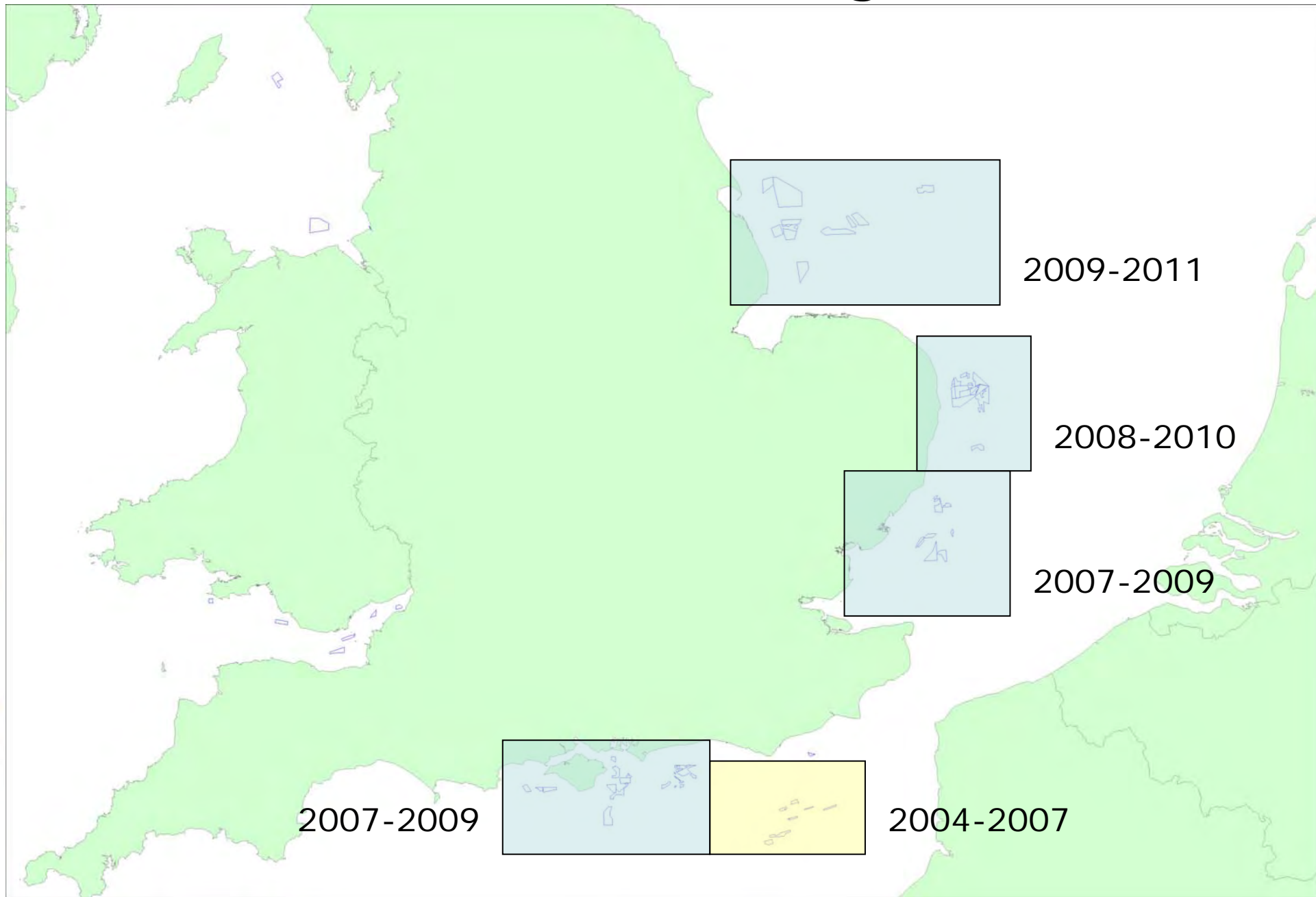
Data comparable and capable of filling gaps in respective programmes

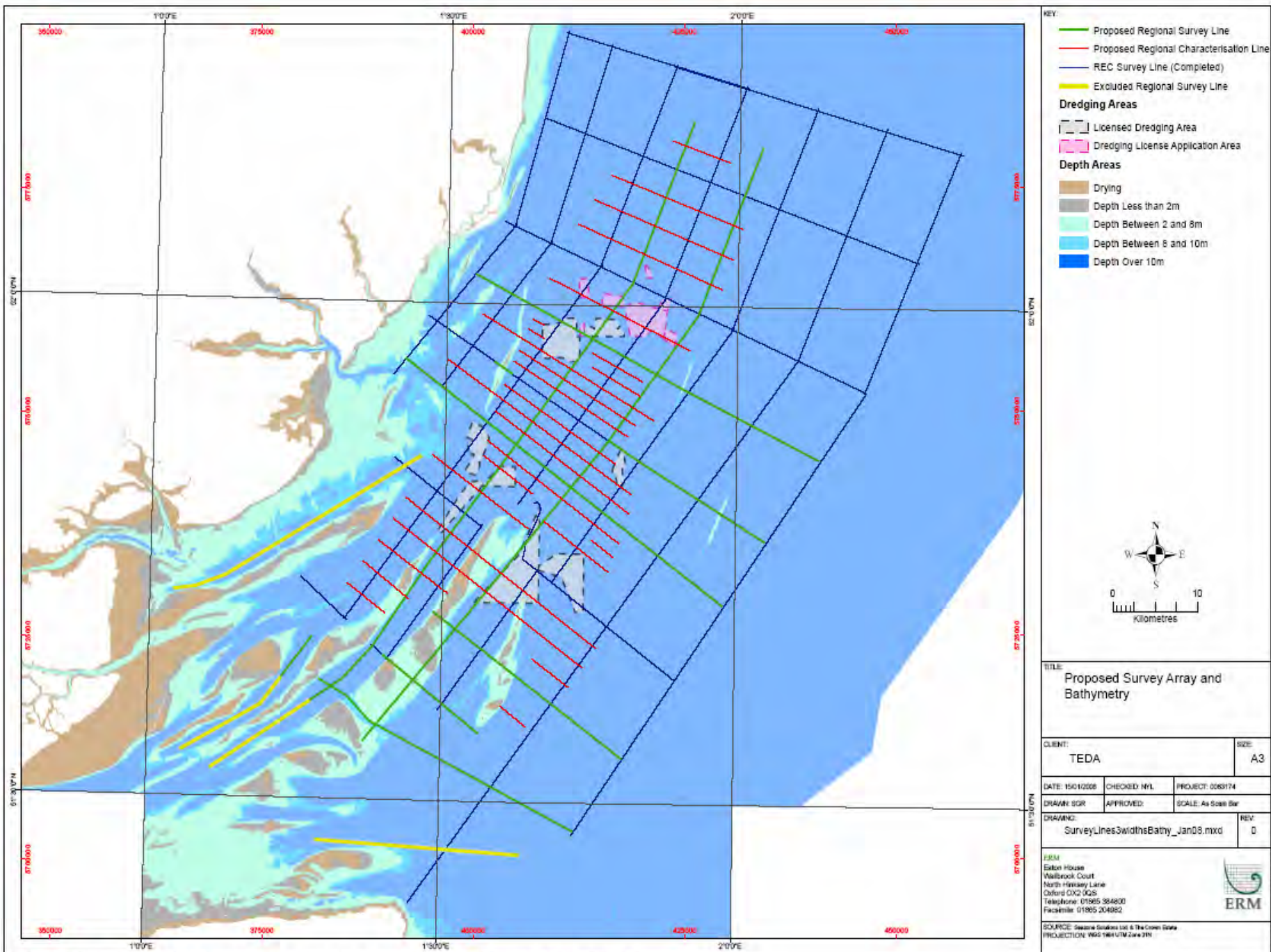
High quality data to describe environmental conditions

Similar data types

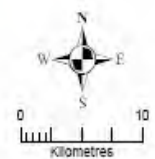
Data from each programme is compatible for integration

Marine ALSF REC Programme





- KEY:**
- Proposed Regional Survey Line
 - Proposed Regional Characterisation Line
 - REC Survey Line (Completed)
 - Excluded Regional Survey Line
- Dredging Areas**
- Licensed Dredging Area
 - Dredging License Application Area
- Depth Areas**
- Drying
 - Depth Less than 2m
 - Depth Between 2 and 8m
 - Depth Between 8 and 10m
 - Depth Over 10m



TITLE:
Proposed Survey Array and Bathymetry

CLIENT: TEDA		SIZE: A3
DATE: 15/01/2008	CHECKED: NPL	PROJECT: 0063174
DRAWN: SGR	APPROVED:	SCALE: As Scale Bar
DRAWING: Survey_Lines3widthsBathy_Jan08.mxd		REV: 0

ERM
 Eaton House
 Wellbrook Court
 North Hauxley Lane
 Oxford OX2 0QS
 Telephone: 01865 864800
 Facsimile: 01865 204882

SOURCE: Seismic Simulations Ltd & The Crown Estate
PROJECTION: WGS 1984 UTM Zone 31N



REC data management

Strategic aim to promote co-ordination and establishment of sustainable archives for the dissemination of research

Publicly funded – ability to access results and data is key

Web based information portal already exists – hosts project metadata and digital reports

<http://www.marinealsf.org.uk/>

Expansion of this facility to host & allow access to project source data – modelled on DAC/MEDIN requirements