



# COSH

## Committee On Shipping Hydrography

Robert Gatliff

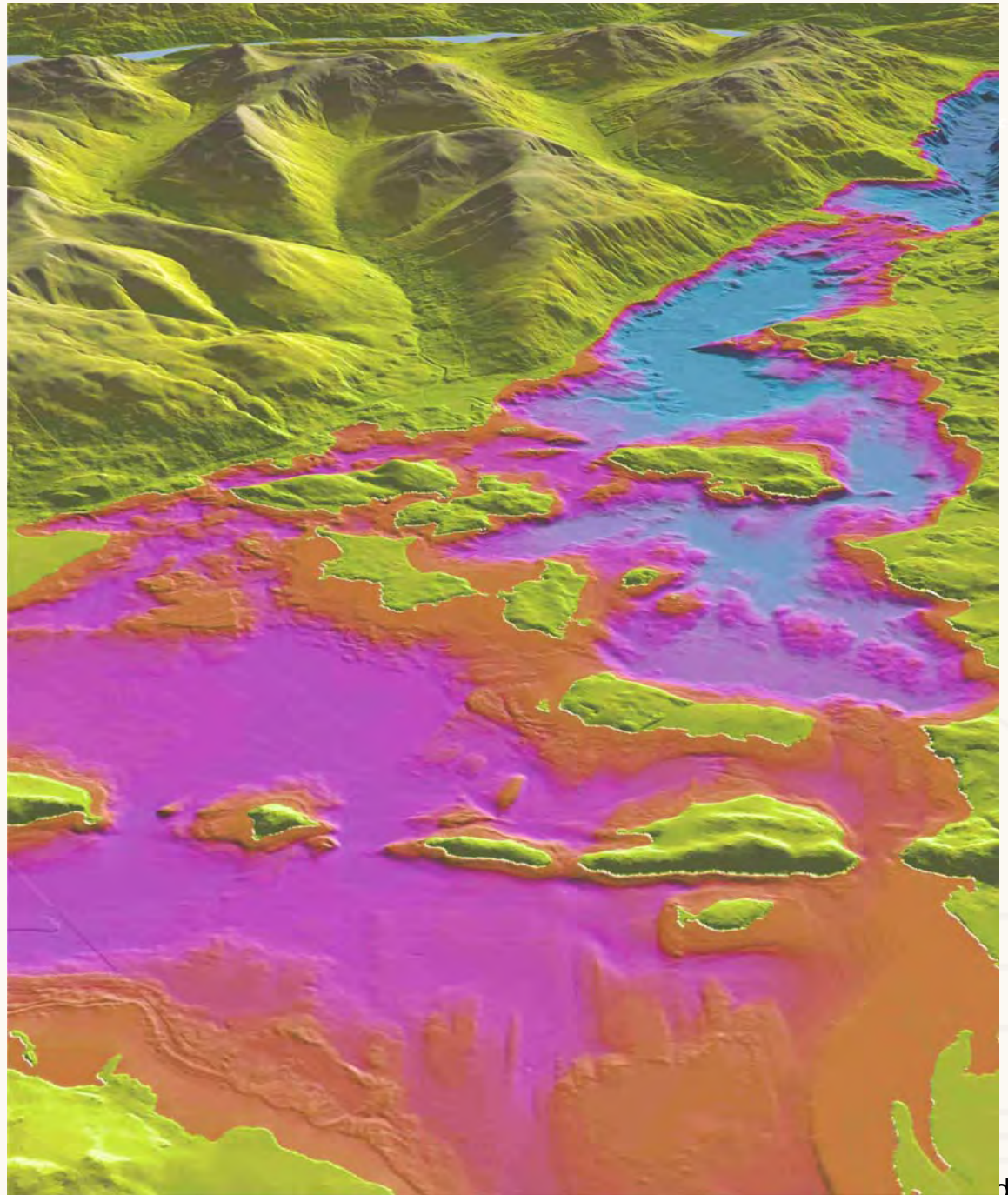
Head, Marine Geoscience

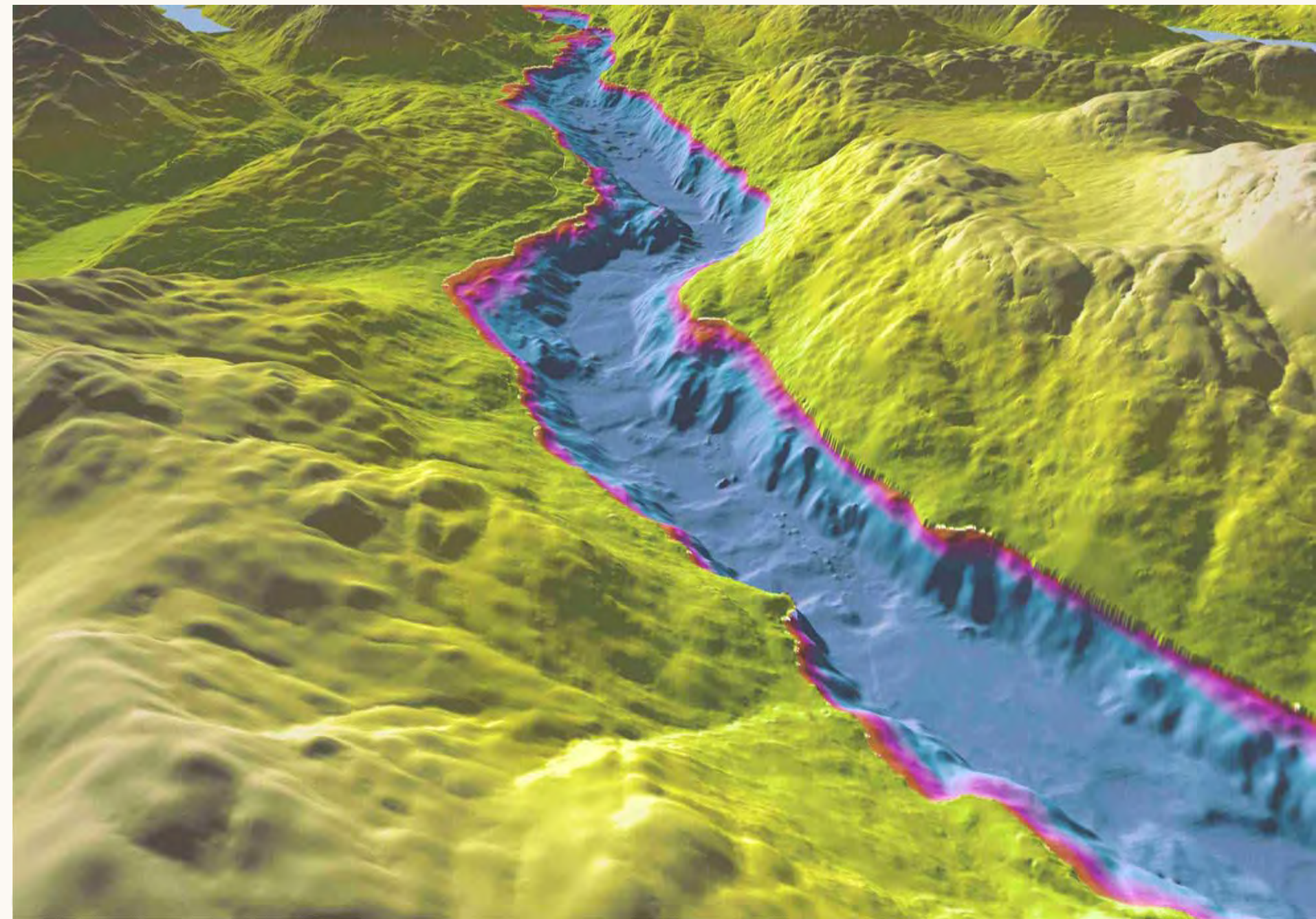
- BGS Results from 2008-2009
- BGS Plans for 2009-2010
- Charting Progress 2010
- Update on National Seabed Survey Working Group

Murchison House  
West Mains Road  
Edinburgh EH9 3LA  
Tel 0131 667 1000

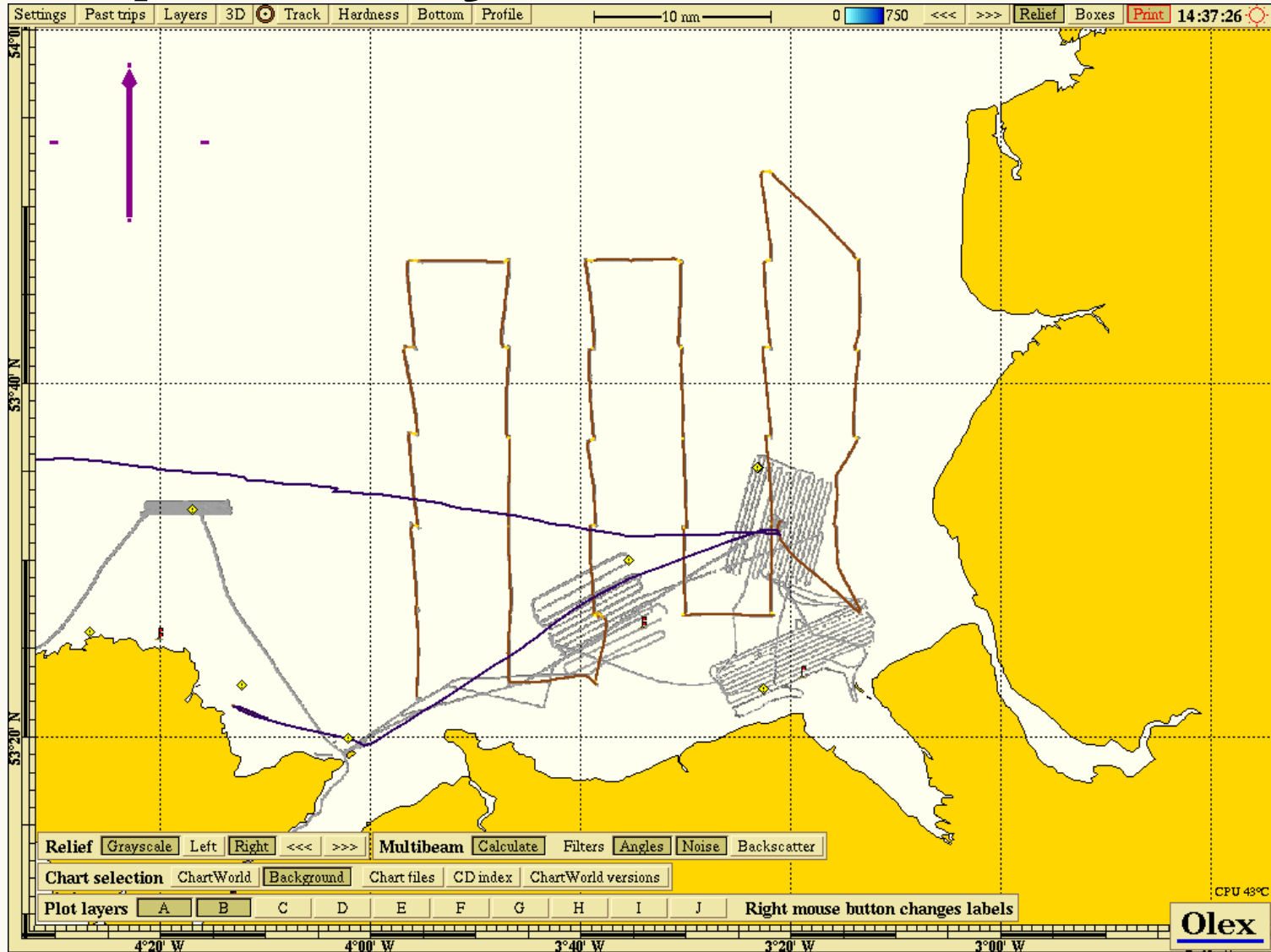
# Loch Lomond multibeam

- Collaboration with Loch Lomond National Park
- Quaternary Geology
- Public education and outreach/exhibits
- Completed 2008





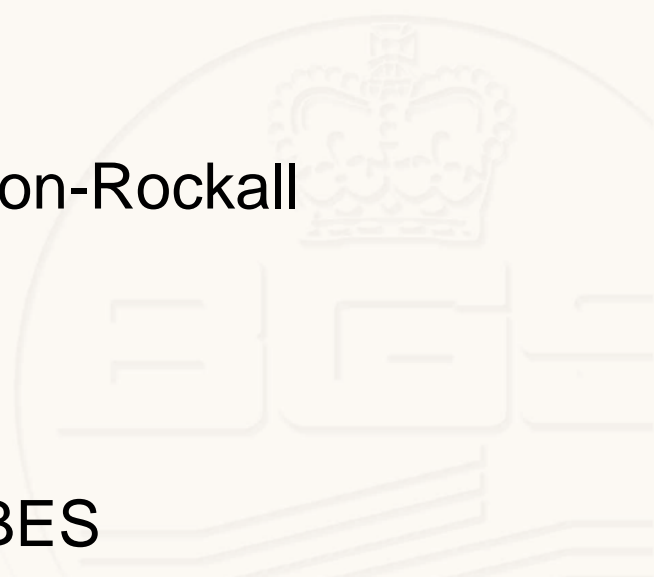
# Liverpool Bay – POL Observatory



# Plans for 2009

www.bgs.ac.uk

- New boat delivered in the Summer
- Commissioning and work in Forth and ?Moray Firth
  - Understanding the last British Ice Sheet
  - Sediment mobility and change
- Flexibility
  - Weather
  - Location
  - Partnerships
- Plymouth
- Main activity: RRV Discovery to Hatton-Rockall
  - Shallow seismic, gravity cores
- Managing two IODP missions
- Aggregate Levy Projects
- New maps and models based on MBES



# Charting Progress 2010

Sedimentary Processes and Morphology

or

“Bathymetry and Geology”

EA, CCO, UKHO, MCA, BGS

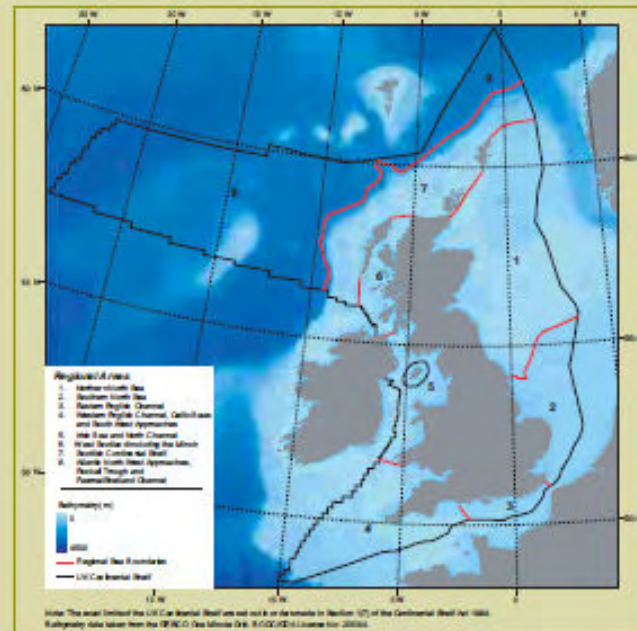
plus

Government and Industry

[www.defra.gov.uk](http://www.defra.gov.uk)

## Charting Progress

An Integrated Assessment of the State of UK Seas



SCOTTISH EXECUTIVE

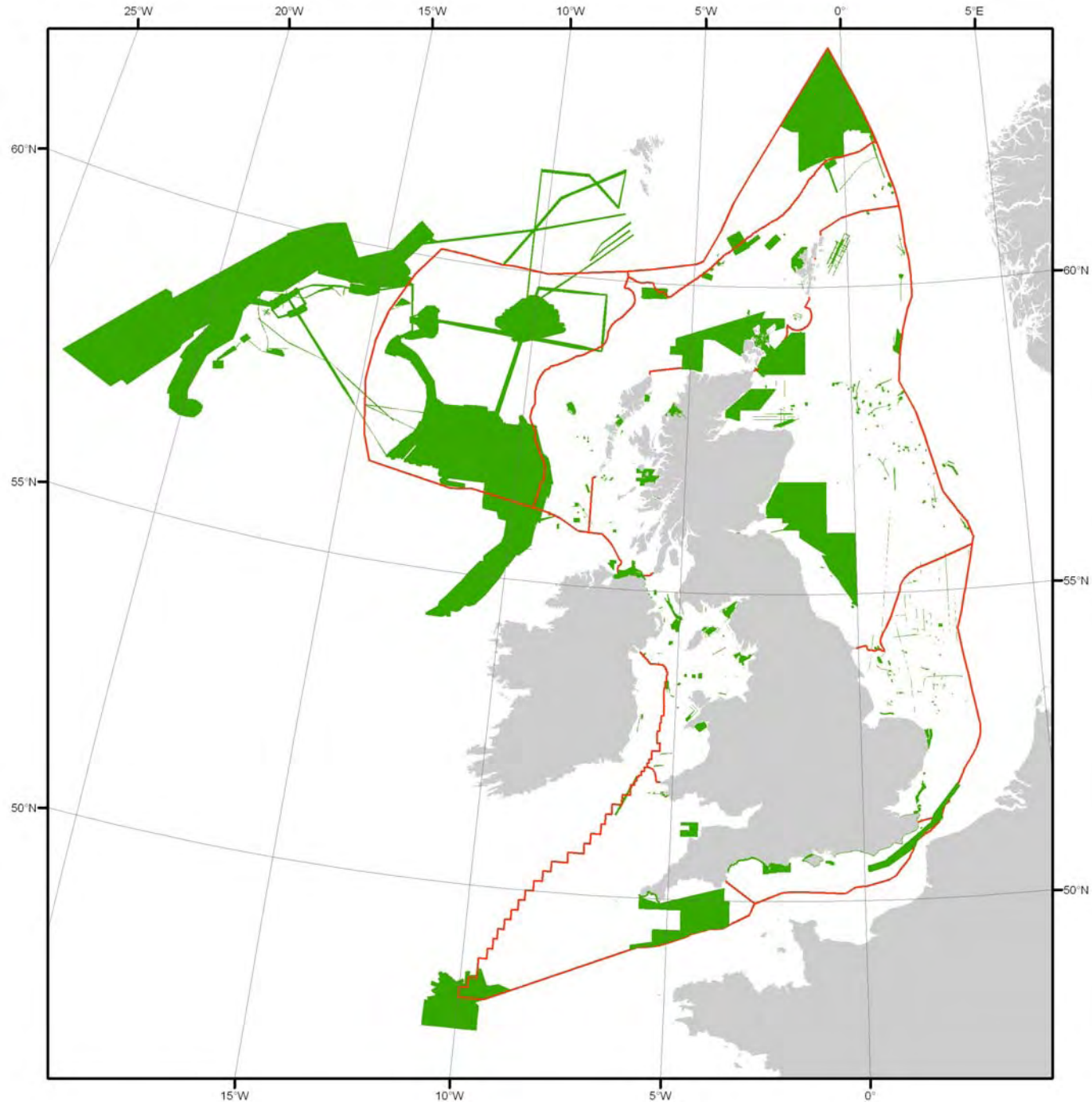


# MBES Coverage in the United Kingdom

15% complete

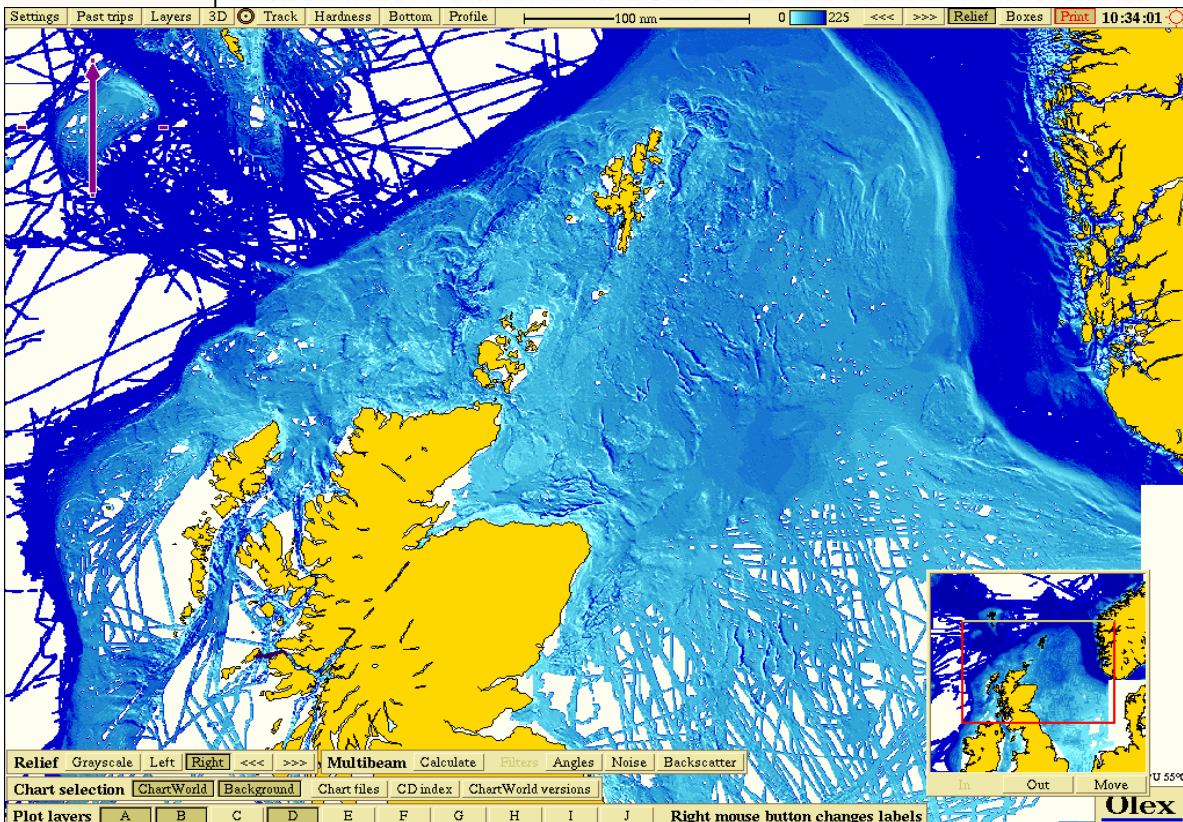
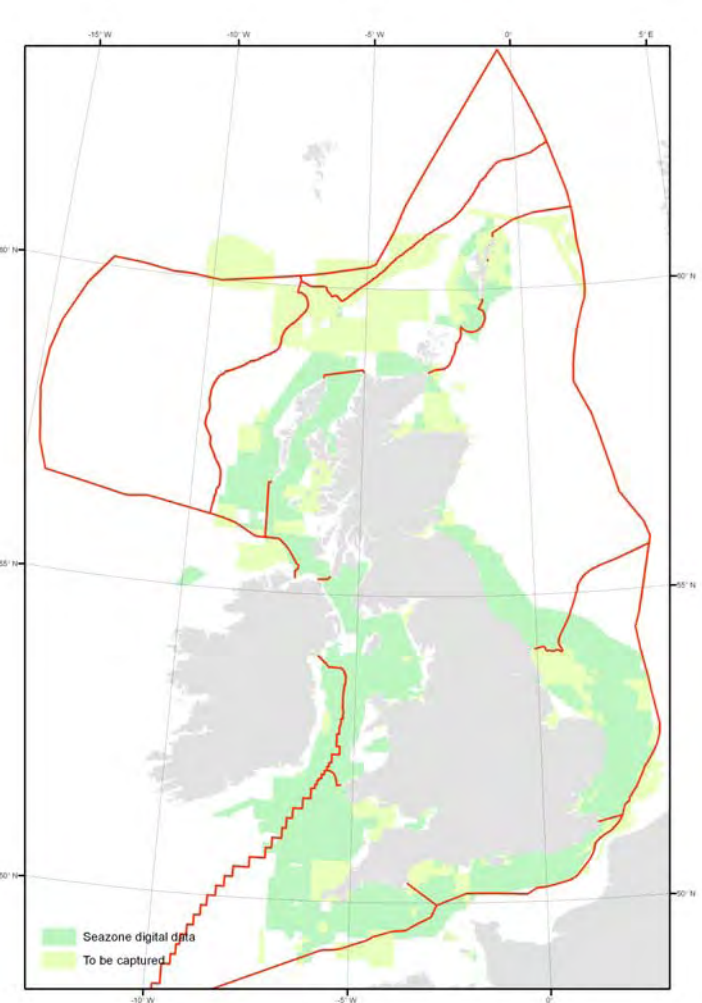
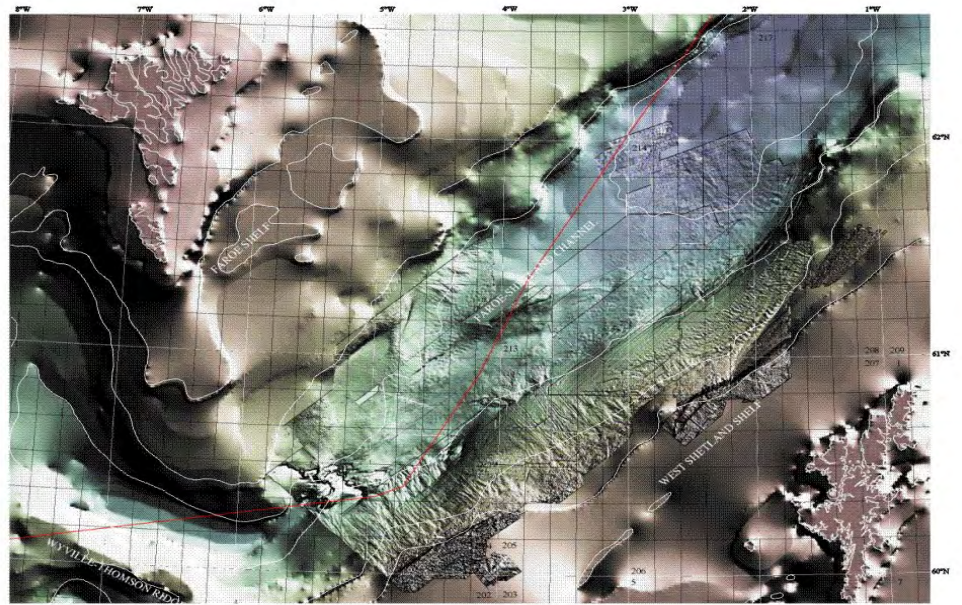
Government  
funded  
surveying

£8M per  
annum approx

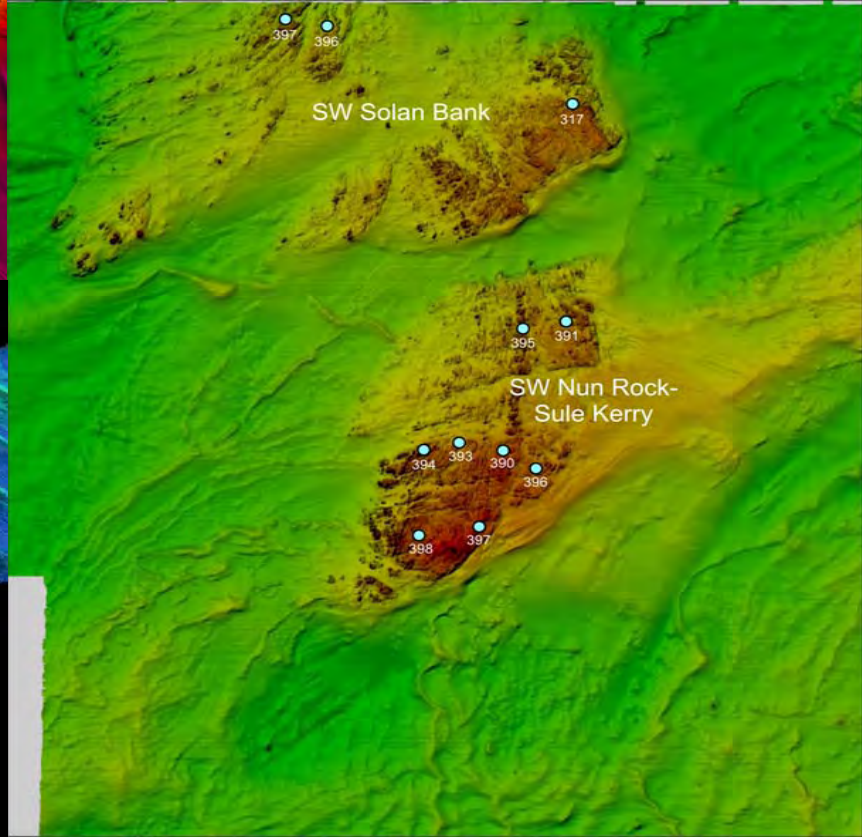
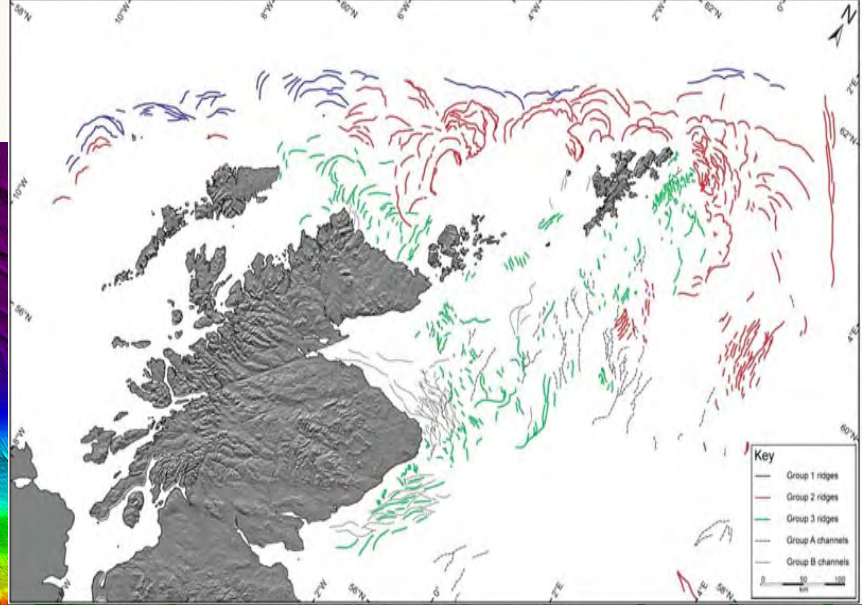
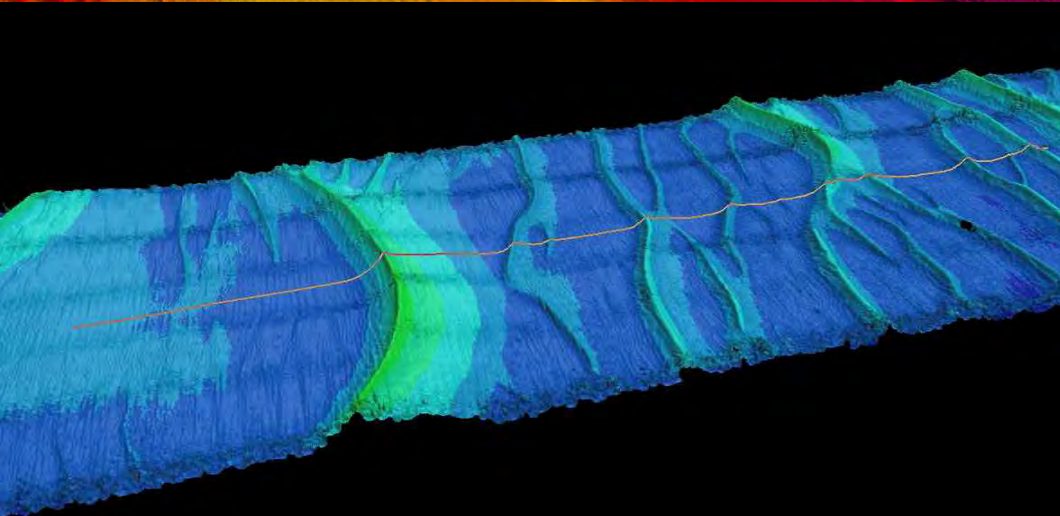
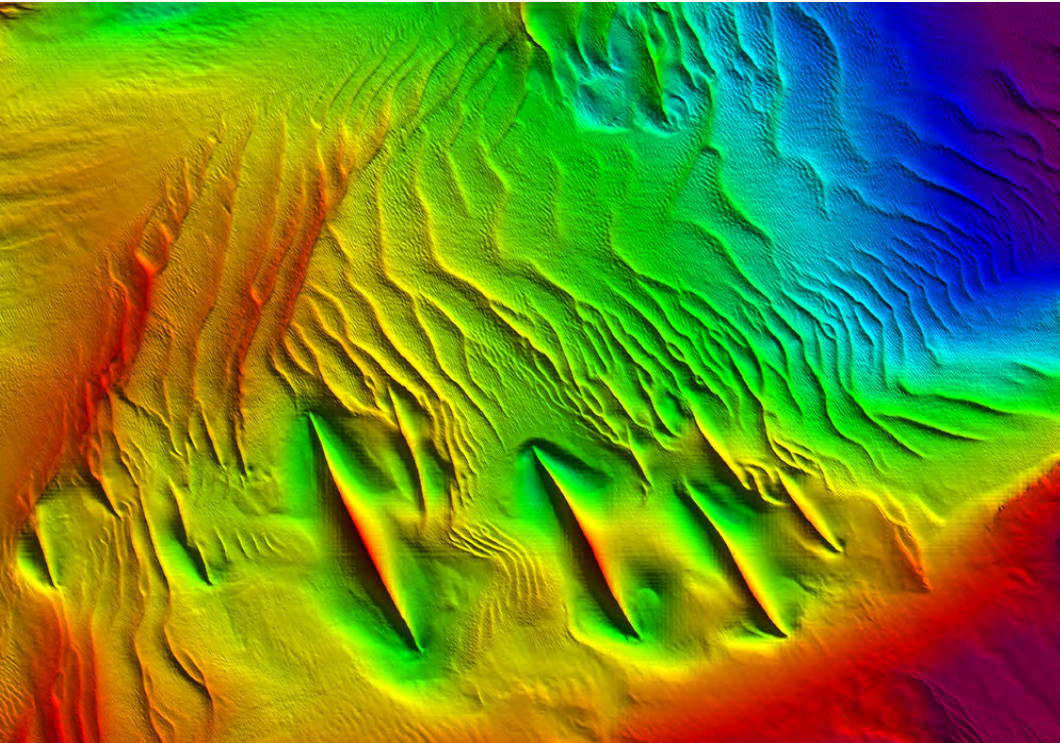


# Other Data

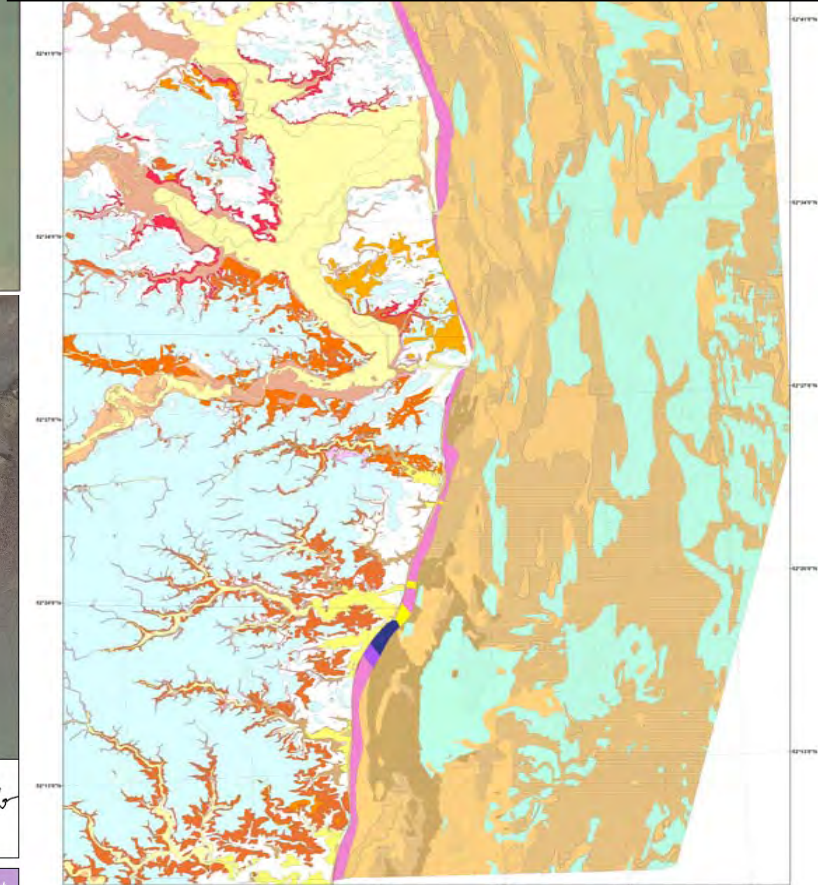
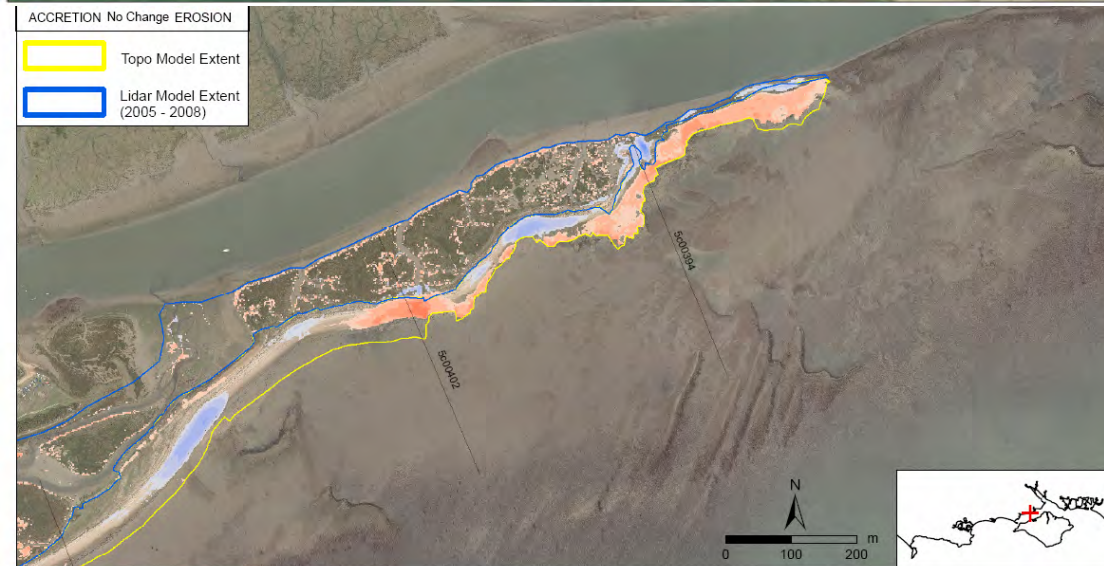
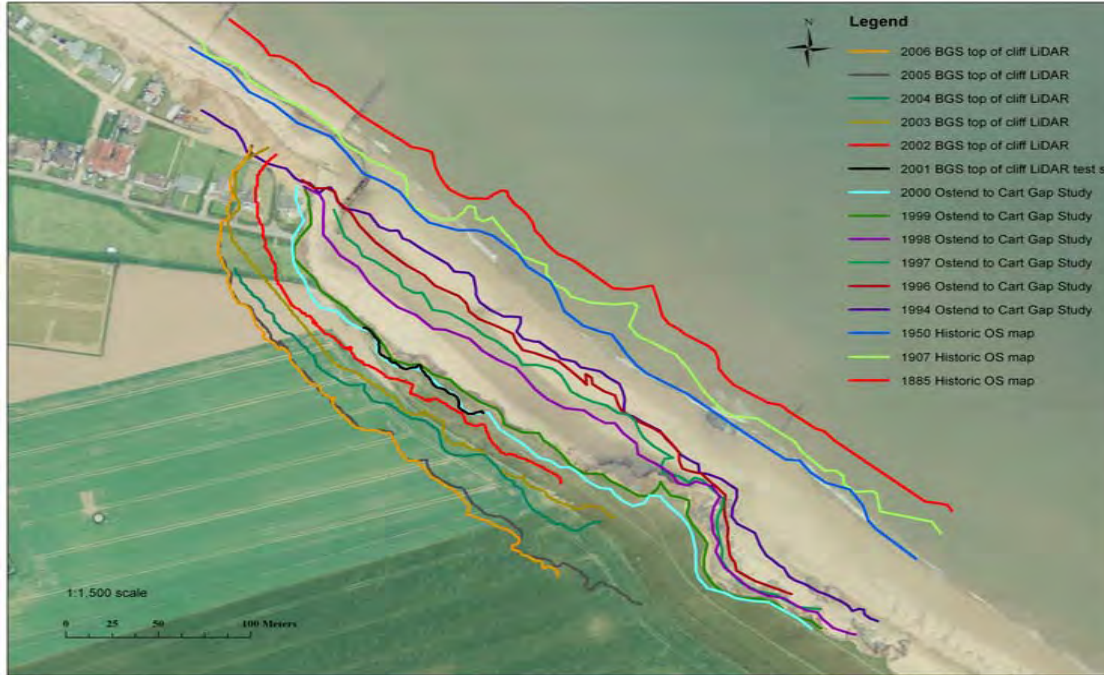
- Olex
- SeaZone digital bathymetry
- 3D seismic data



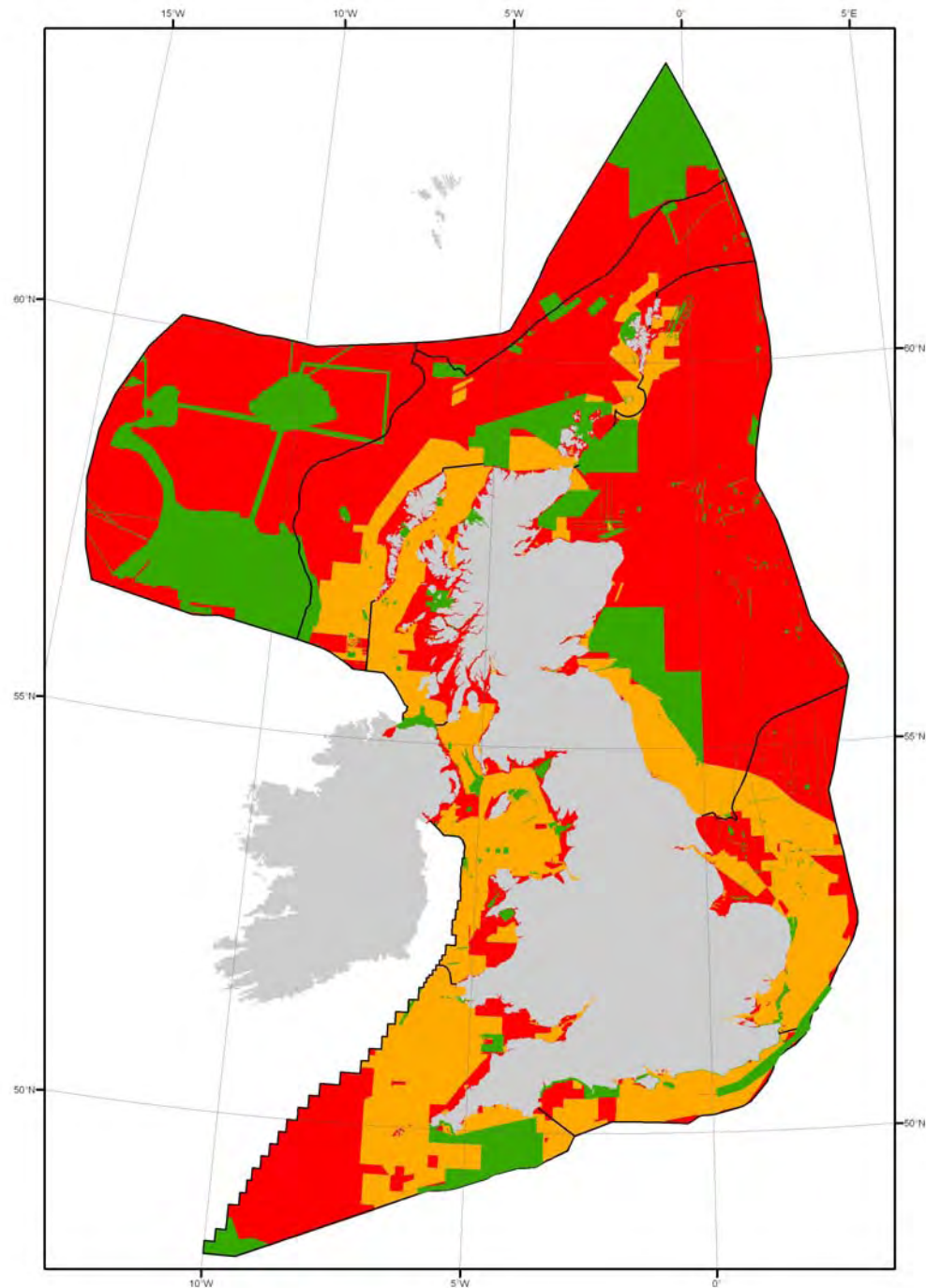
# Case Studies - 1



# Case Studies -2



# State of Bathymetry in the UK



# National SeaBed Survey Working Group

www.bgs.ac.uk

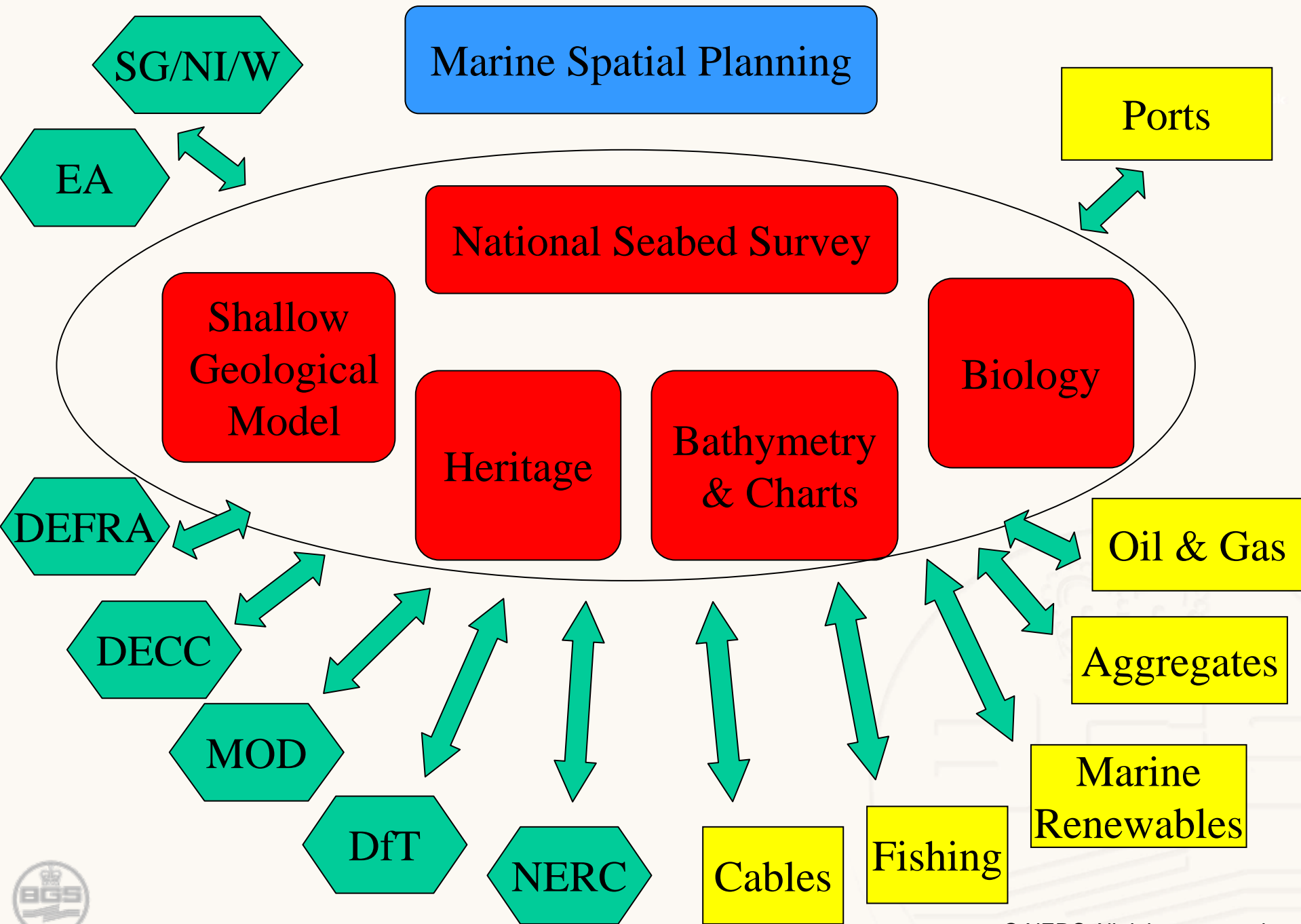
- **OBJECTIVE**

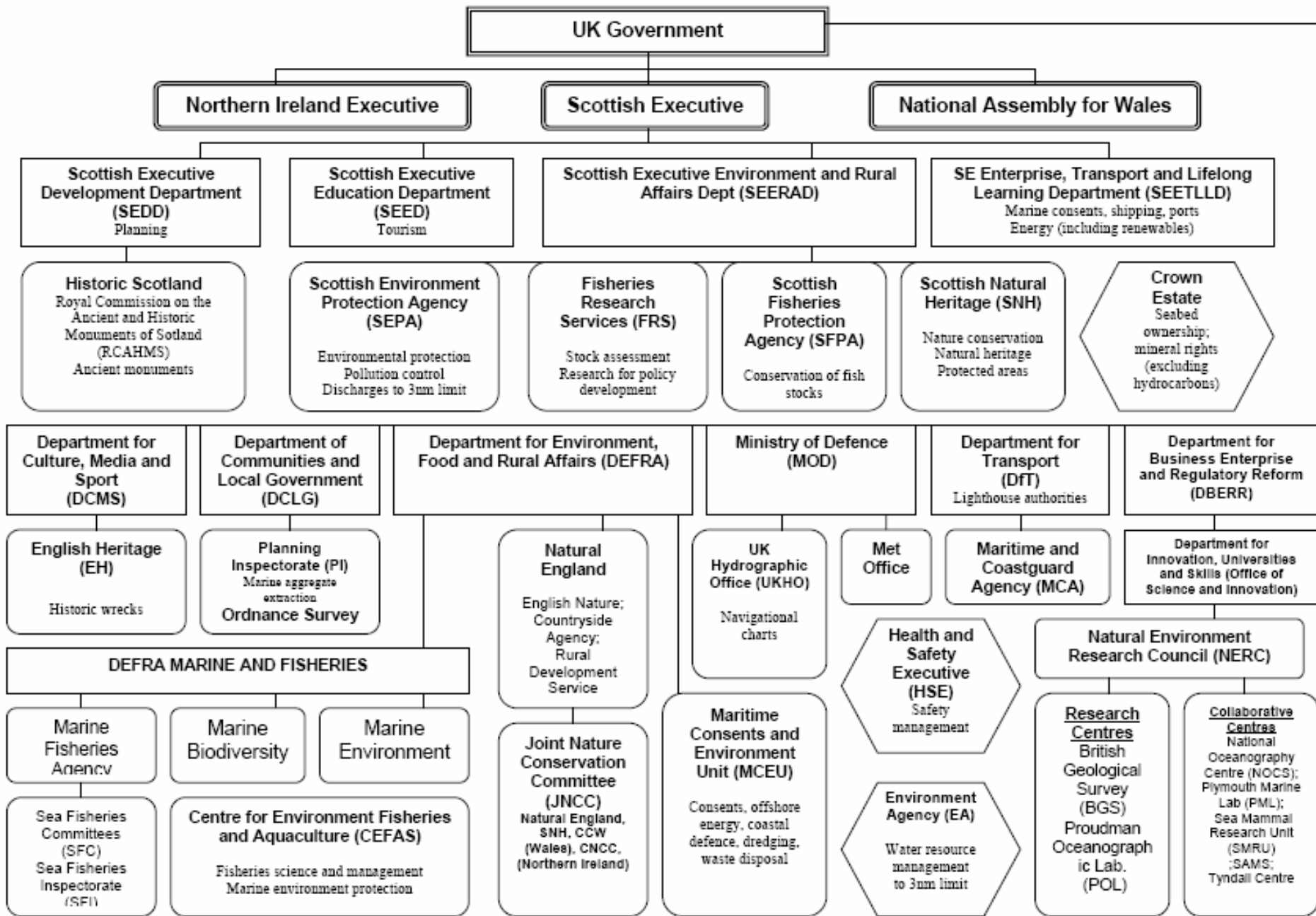
- To submit a report and recommendations to Government and the proposed MMOs (through HBDSEG/PSEG and MARG) with priority actions to improve the mapping, assessment and monitoring of seabed character, including the identification of priorities for new survey and resource requirements



- Assessment of existing data
- Assessment of existing survey programmes
- Co-ordination of new surveys
- Encourage the collection of quality assured data that is suitable for multiple use
- Identify areas where there is no de facto funded programme
- Provide recommendations for achieving strategic national seabed maps of the UK designated area
- Promote archiving of and access to seabed data
- Report developing the case for a National Seabed Survey







# Forward Look- Two end members

Continue to coordinate across government and industry

Complex

Potential for wasted funding

Accounts for multiple priorities

New Regime – centralised funding

Easier to manage

Efficiency gains

Loss of control on priorities, but easier to take strategic decisions



# Conclusions

- 15% coverage of multibeam (but some in deep water)
- Clear case for complete coverage – marine spatial planning will fail without good spatial information
- Current rates of survey will require many years
- Potential for increased efficiencies and co-ordination
- Changes in priority e.g. renewables, SOLAS, habitats, sea defences etc
- Interpretation and outputs under-funded

