
Spectator Craft Attending the London Olympic Games 2012 and London Paralympic Games 2012

Notice to all owners, operators and Master's of all spectator craft and other vessels attending the London Olympic Games 2012 or the London Paralympic Games 2012

This MIN expires 30th September 2012

Summary

All vessels being used to attend the Olympic and Paralympic Sailing Regattas that are not private "pleasure vessels" will be required to carry an appropriate certificate for the activity being undertaken to demonstrate that they have been surveyed and found to comply with the relevant requirements. Certain pleasure vessels will also be required to carry certification.

Owners/operators of vessels being used to attend the sailing regattas may arrange to have their vessel inspected prior to attending to avoid inconvenience during the events.

1. Introduction

- 1.1 The London Olympic Games 2012 take place between 27th July 2012 and the 12th August 2012 and London Paralympic Games 2012 take place between the 29th August 2012 and the 9th September 2012. There will also be preparatory events such as Sail for Gold in the lead up to the Olympic and Paralympic sailing regattas.
- 1.2 While much of the sporting activity is taking place in the London area, the Olympic Sailing Regatta and Paralympic Sailing Regatta will take place in the Portland Harbour and Weymouth Bay area. It is expected that spectator boats will be attending the Weymouth and Portland area, and also in smaller numbers, the River Thames.
- 1.3 To avoid confusion when these events take place, this Marine Information Note provides basic information on the certification requirements for spectator craft attending. Failure to comply with these requirements may mean that the vessel is prohibited from being used.

2. Categorisation of waters

- 2.1 At the time of the Olympic and Paralympic Sailing Regattas the waters in the River Thames and Weymouth and Portland areas will be categorised as follows:

The River Thames to the west of a line between Reculvers and Clacton Pier is categorised waters. To the east of that line is considered to be at sea. See Annex 1 for a chart of this area.

In the Weymouth and Portland area the categorised waters are west of a line between Grove Point and Redcliff Point. East of that line is considered to be at sea. See Annex 2 for a chart of this area.

2.2 In the Weymouth and Portland area it is expected that there will be a Harbour Revision Order in place which will temporarily amend the harbour limits for the period of the Games. This will not affect the categorisation of waters under Merchant Shipping legislation. A full list of categorised waters can be found in MSN 1827 (M) – “Categorisation of Waters”.

3. Vessels required to have valid certification

3.1 In the United Kingdom any vessel that is not a “pleasure vessel” as defined in the Merchant Shipping (Vessels in Commercial Use for Sport or Pleasure) Regulations 1998 (SI 1998 No. 2771), as amended, is required to have onboard appropriate valid certification for the intended use of the vessel. The definition of pleasure vessel in the above Regulations is:

"pleasure vessel" means-

(a) any vessel which at the time it is being used is:

(i)

(aa) in the case of a vessel wholly owned by an individual or individuals, used only for the sport or pleasure of the owner or the immediate family or friends of the owner; or (bb) in the case of a vessel owned by a body corporate, used only for sport or pleasure and on which the persons on board are employees or officers of the body corporate, or their immediate family or friends; and

(ii) on a voyage or excursion which is one for which the owner does not receive money for or in connection with operating the vessel or carrying any person, other than as a contribution to the direct expenses of the operation of the vessel incurred during the voyage or excursion; or

(b) any vessel wholly owned by or on behalf of a members' club formed for the purpose of sport or pleasure which, at the time it is being used, is used only for the sport or pleasure of members of that club or their immediate family, and for the use of which any charges levied are paid into club funds and applied for the general use of the club; and

(c) in the case of any vessel referred to in paragraphs (a) or (b) above no other payments are made by or on behalf of users of the vessel, other than by the owner.

3.2 Pleasure vessels are also required to carry valid certification when they are carrying more than 12 passengers.

4. Certification requirements for all vessels carrying more than 12 passengers (including pleasure vessels).

4.1 Any vessel that is carrying more than 12 passengers, including pleasure vessels, will be required to be issued with an appropriate Passenger Ship Safety Certificate for that vessel and the area in which it will be operating.

5. Certification requirements for vessels carrying 12 or fewer passengers (excluding pleasure vessels)

5.1 Vessels carrying 12 or fewer passengers, not proceeding to sea.

5.1.1 Any vessel that is being hired, carrying 12 or fewer passengers, and not proceeding to sea, is required to be licensed as a minimum by the Local Authority. Proceeding to sea means to proceed beyond categorised waters.

5.2 Small Vessels carrying 12 or fewer passengers, proceeding to sea.

5.2.1 Any vessel that is not a “pleasure vessel”, carrying 12 or fewer passengers, is less than 24 metres load line length (or less than 150 tons if built before 21st July 1968), and is proceeding to sea, is required to be issued with a Small Commercial Vessel Certificate.

5.3 Large Yachts carrying 12 or fewer passengers, proceeding to sea.

5.3.1 Any vessel that is not a “pleasure vessel”, carrying 12 or fewer passengers, is 24 metres load line length or greater (or 150 tons or greater if built before 21st July 1968), is proceeding to sea, and is being used for sport or pleasure, is required to be issued with a Large Commercial Yacht Certificate.

5.4 Other vessels

5.4.1 If you are attending the event on a vessel which is not covered by this Note please contact the MCA to discuss the requirements applicable to your vessel. Contact details are provided in paragraph 8.2.

6. Foreign vessels

6.1 Vessels that are not UK vessels will be required to meet, as a minimum, the standards prescribed for UK vessels. The MCA will give no more favourable treatment to non-UK vessels than it would to UK vessels.

6.2 To avoid any difficulties that may arise for foreign vessels being used to attend the Olympic or Paralympic Sailing Regattas, it is most strongly recommended that contact is made with the MCA as early as possible to ensure that the vessel is certified correctly.

7. Manning

7.1 Guidance can be found on the manning of small commercial vessels in MGN 280 (M), on the manning of passenger vessels in MSN 1808 (M) and on the manning of large commercial yachts in MSN 1792 (M) and MSN 1802 (M).

7.2 Due to the wide variety of manning requirements for different vessels, it is recommended that if required, further advice is sought from the local MCA Marine Office (see 8.2) or MCA’s Seafarer Training and Certification Branch (Tel: (023) 8032 9231) if there is any doubt as to the manning requirements.

8. MCA Inspections

8.1 MCA inspectors may carry out random or targeted inspections of UK and foreign vessels at any reasonable time to ensure the appropriate standards are being complied with.

8.2 If you would prefer not to have your vessel inspected by the MCA when the vessel is on charter and there are guests onboard, you may call either of the MCA’s Marine Offices in the relevant area and arrange for a pre-inspection. This may not be possible for foreign

vessels. A pre-inspection however would not exempt a vessel from further inspection if MCA had clear grounds for believing that the vessel was not being operated safely. MCA Marine Office contact details are:

Southampton Marine Office for the Weymouth and Portland area on (023) 8032 9329; or Orpington Marine Office for the River Thames area on (01689) 890 400.

More Information

Vessel Policy Branch
Maritime and Coastguard Agency
Bay 2/30
Spring Place
105 Commercial Road
Southampton
SO15 1EG

Tel : +44 (0) 23 8032 9139
Fax : +44 (0) 23 8032 9104
e-mail: codes@mcga.gov.uk

General Inquiries: infoline@mcga.gov.uk

MCA Website Address: www.mcga.gov.uk

File Ref: MS 183/002/0004

Published: December 2011
Please note that all addresses and telephone numbers are correct at time of publishing



© Crown Copyright 2011

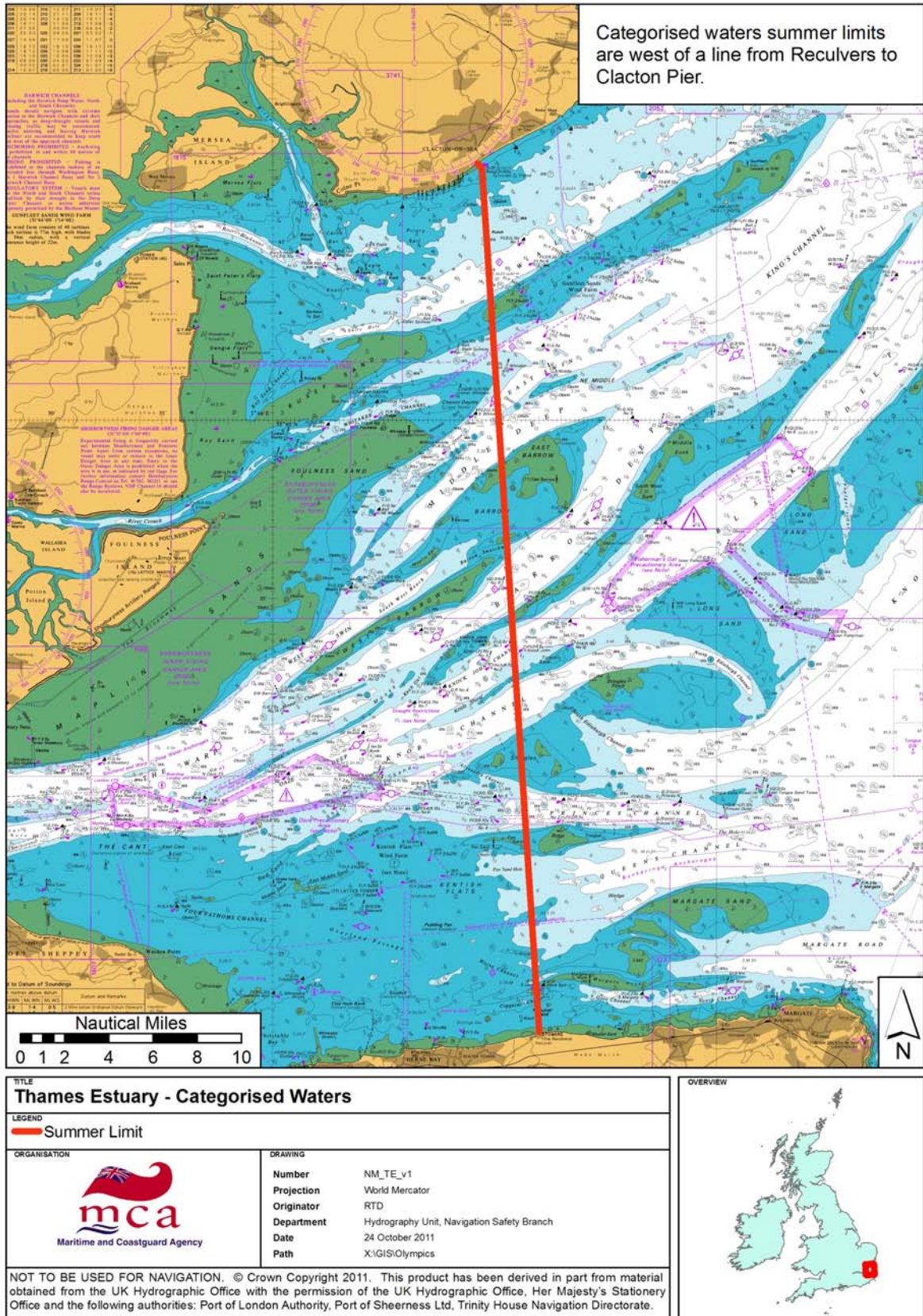
Safer Lives, Safer Ships, Cleaner Seas

*An executive agency of the
Department for
Transport*

When printed by the MCA the material used contains a minimum 75% post-consumer waste paper

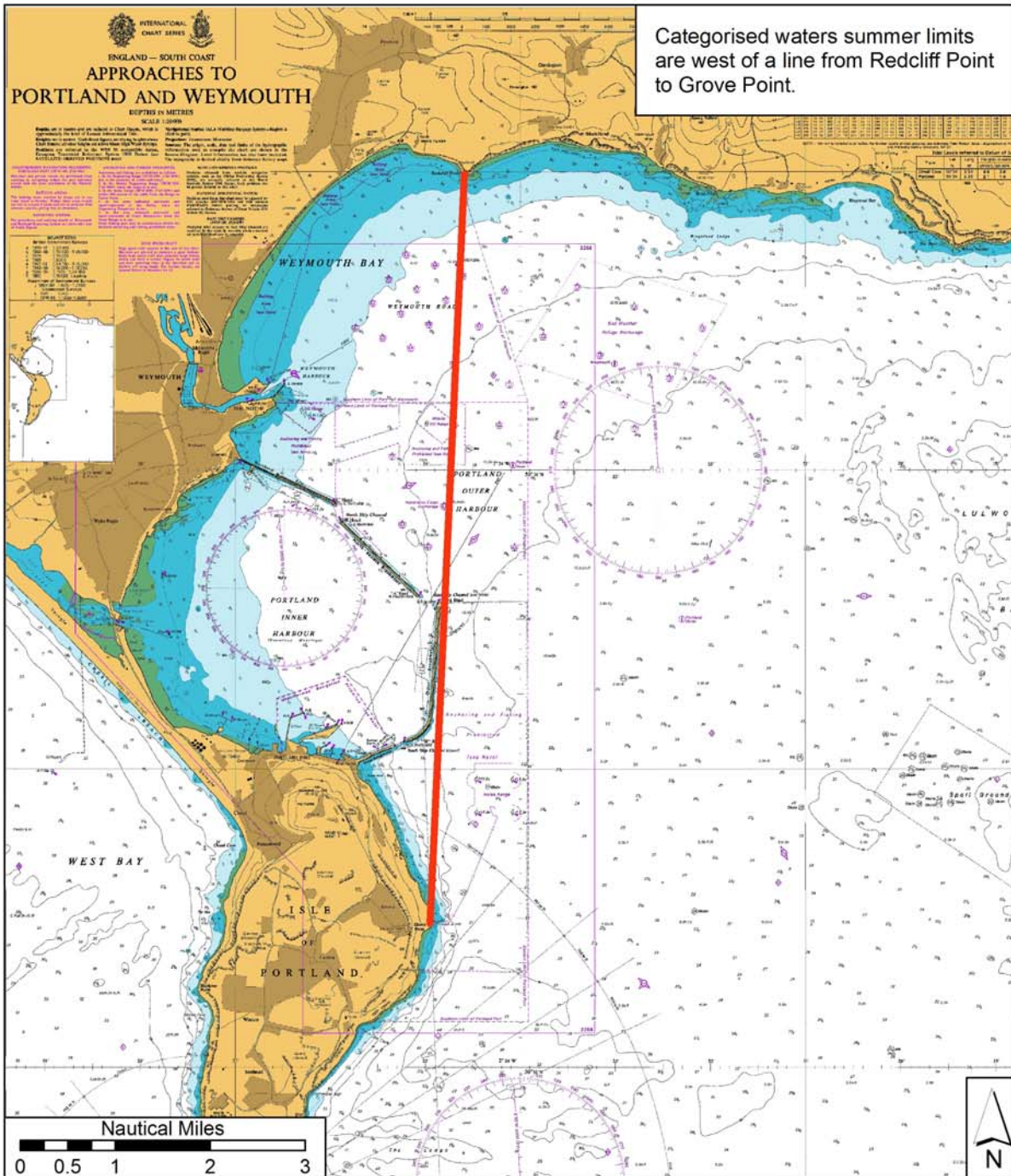
ANNEX 1

Categorised waters in the Thames Estuary.



ANNEX 2

Categorised waters Weymouth Bay and Portland Harbour



TITLE Thames Estuary - Categorised Waters	
LEGEND Summer Limit	
ORGANISATION Maritime and Coastguard Agency	DRAWING Number: NM_P&W_v1 Projection: World Mercator Originator: RTD Department: Hydrography Unit, Navigation Safety Branch Date: 24 October 2011 Path: X:\GIS\Olympics
NOT TO BE USED FOR NAVIGATION. © Crown Copyright 2011. This product has been derived in part from material obtained from the UK Hydrographic Office with the permission of the UK Hydrographic Office, Her Majesty's Stationery Office.	

