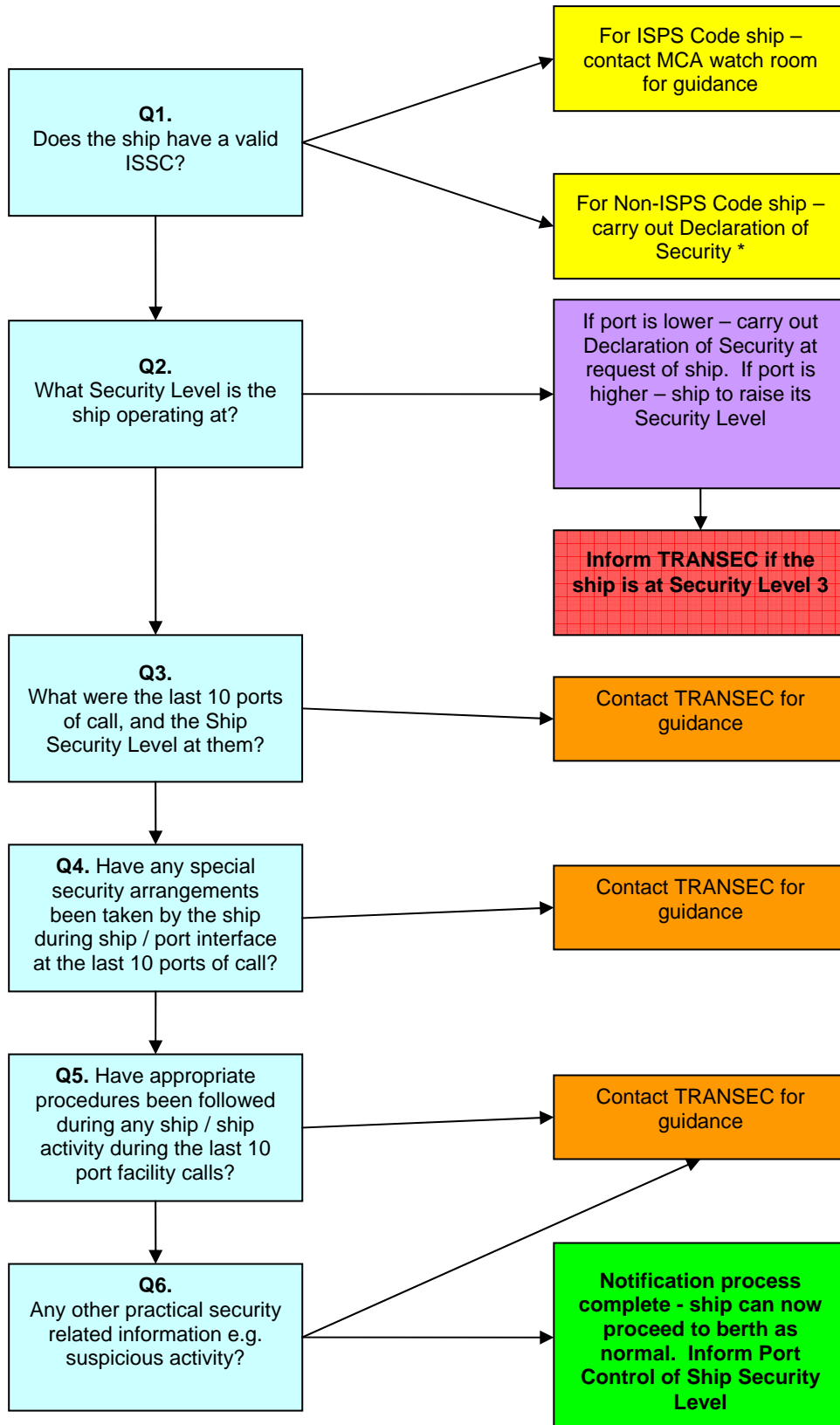


Stage 2: PFSO Procedures

Port Facility Security Officer – Decision Making Flowchart

A ship declares its intention to enter a UK port, giving 24 hour notice (either directly or via ship's agent). The PFSO receives notification and asks the following questions:



* A Non-ISPS Ship is one that either falls outside of the convention size, i.e. less than 500gt; or the Flag Administration is not a signatory to SOLAS.